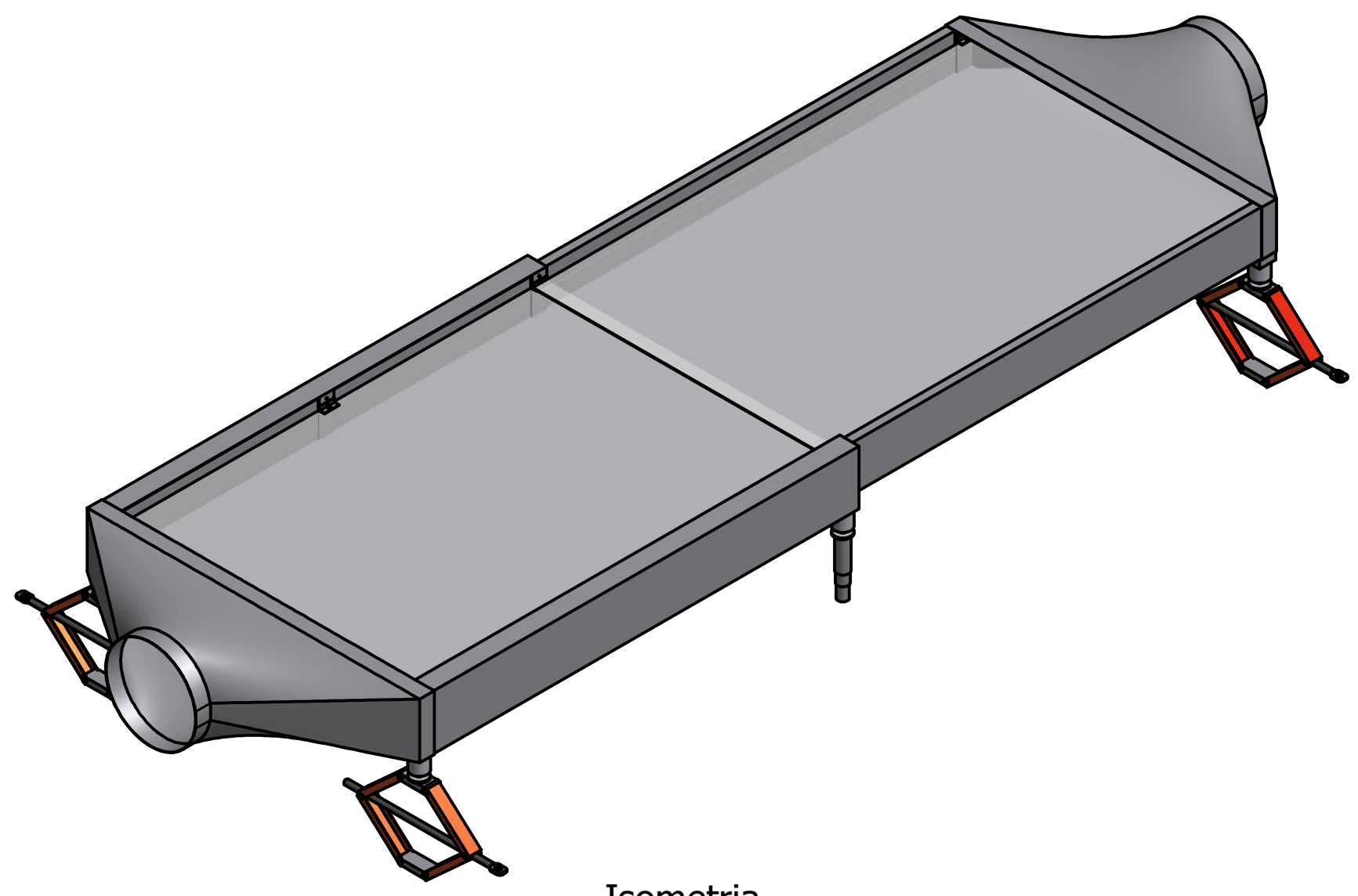
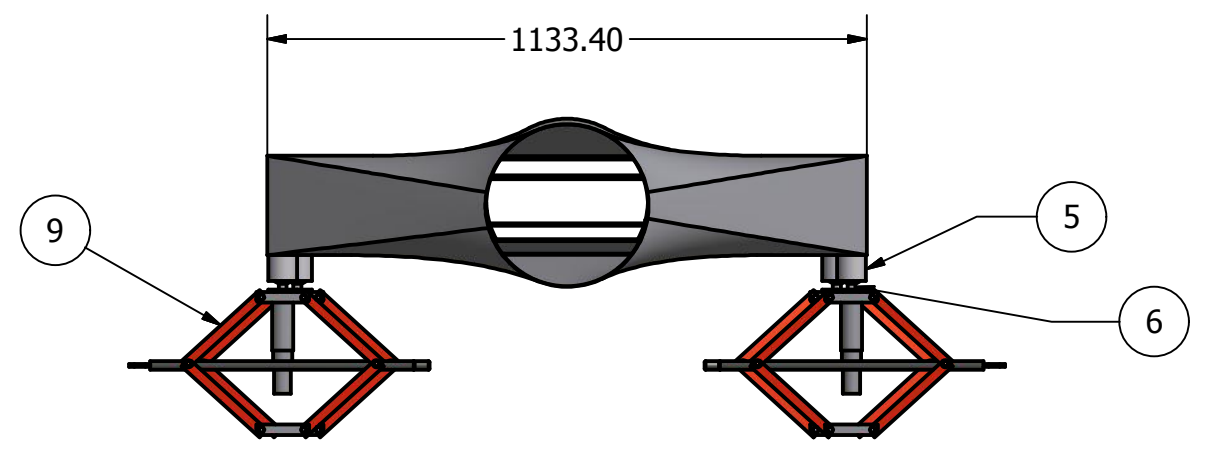


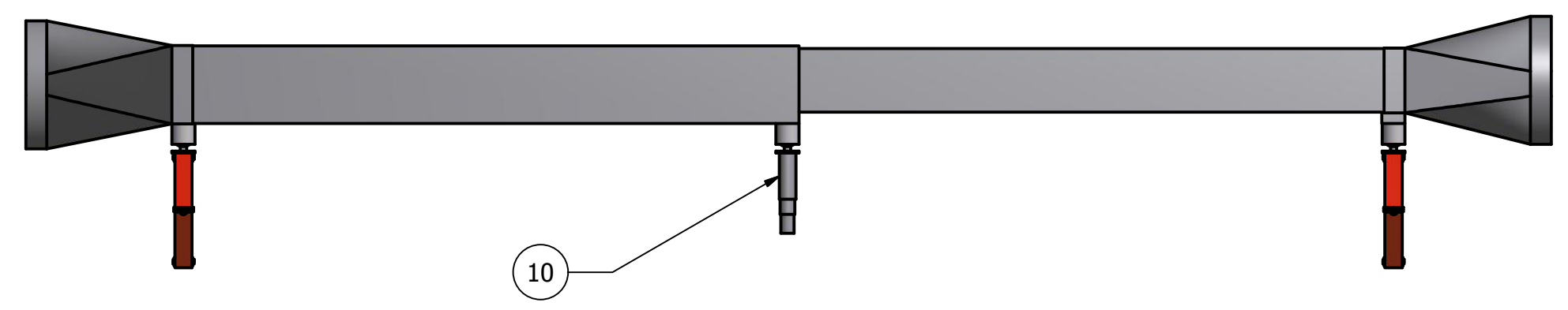
PARTS LIST			
ITEM	QTY	PART NUMBER	MATERIAL
1	1	Módulo Fijo (estructura base)	Galvanized Steel
2	1	Módulo Móvil (estructura base)	Galvanized Steel
3	8	Soporte de lamina transparente	Galvanized Steel
4	2	Lamina Transparente	PMMA Plastic
5	6	Soporte de Rotula	Aluminum-6061
6	6	Rotula	Aluminum-6061
7	1	Tobera de Salida	Galvanized Steel
8	1	Difusor de Entrada	Galvanized Steel
9	4	Gato tipo Tijera	
10	2	Soporte retráctil	



Isometria
SCALE 0.07 : 1



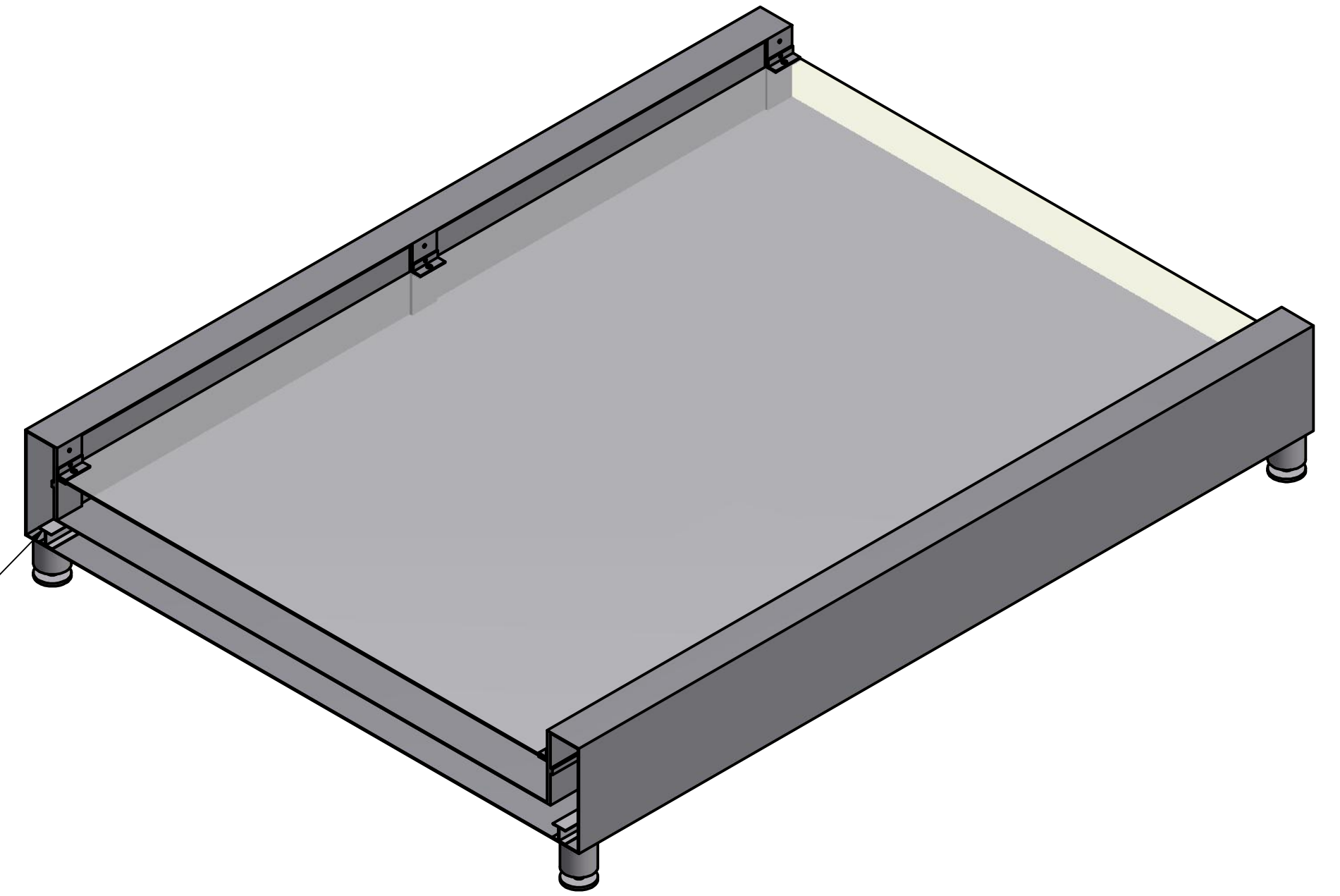
Vista Frontal
SCALE 0.07 : 1



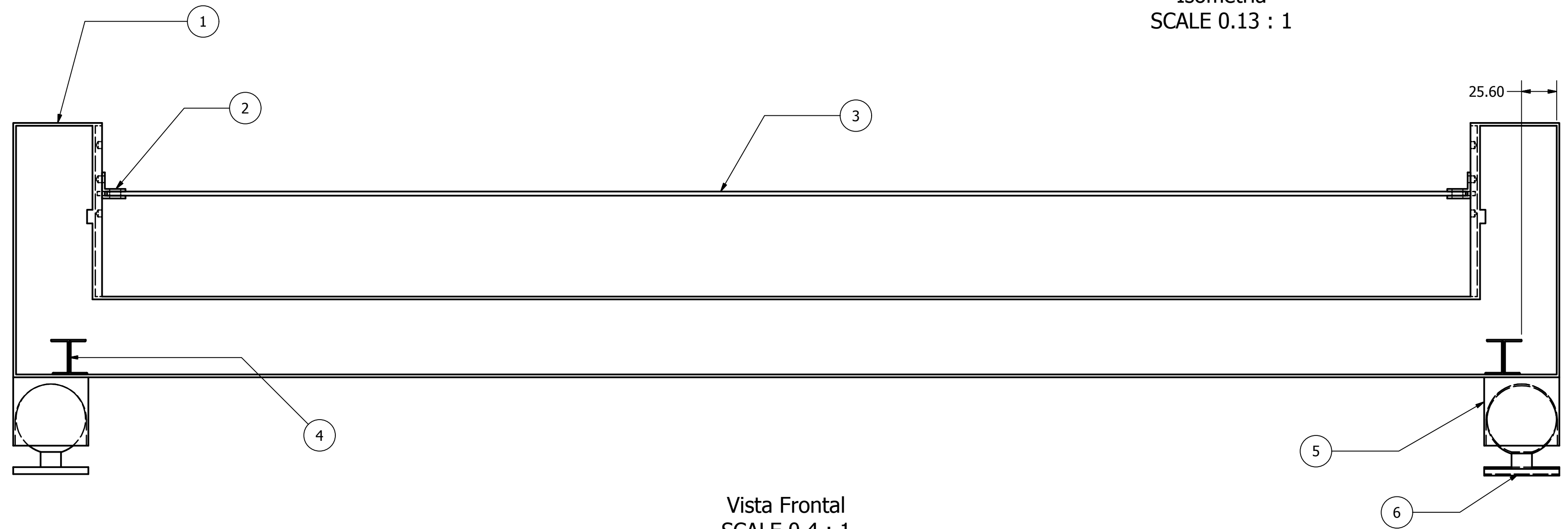
Elaborado	Fecha	UNIVERSIDAD CENTRAL DE VENEZUELA	
Meza, Maria C. Carvalho, Daniel	11/29/2012	TITULO Colector solar ensamblado	
		Elemento	REV
		Colector Solar	
		SHEET 1 OF 1	

PARTS LIST			
ITEM	QTY	PART NUMBER	MATERIAL
1	1	Módulo fijo (estructura)	Galvanized Steel
2	6	Soporte de lamina transparente	Galvanized Steel
3	1	Lamina transparente	PMMA Plastic
4	4	TES 1 pulg x 1.5 m	Aluminum-6061
5	4	Soporte de Rotula	Aluminum-6061
6	4	Rotula	Aluminum-6061

Viga tipo T de aluminio
contrapuesta para forma
una viga tipo I

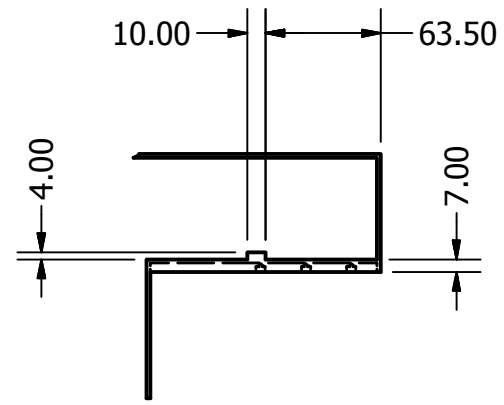


Isometria
SCALE 0.13 : 1



Vista Frontal
SCALE 0.4 : 1

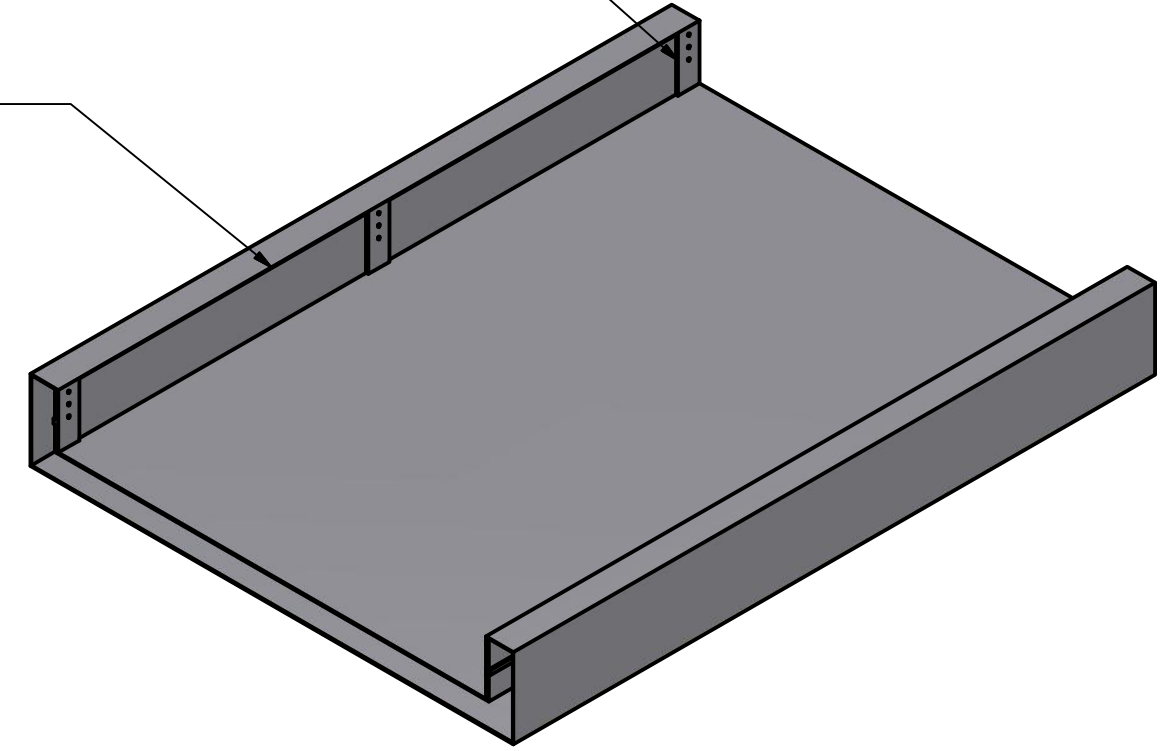
Elaborado	Fecha	UNIVERSIDAD CENTRAL DE VENEZUELA	
Meza, Maria C. Carvalho, Daniel	11/14/2012	TITULO	REV
		Elemento	
		Modulos	
		SHEET 1 OF 4	



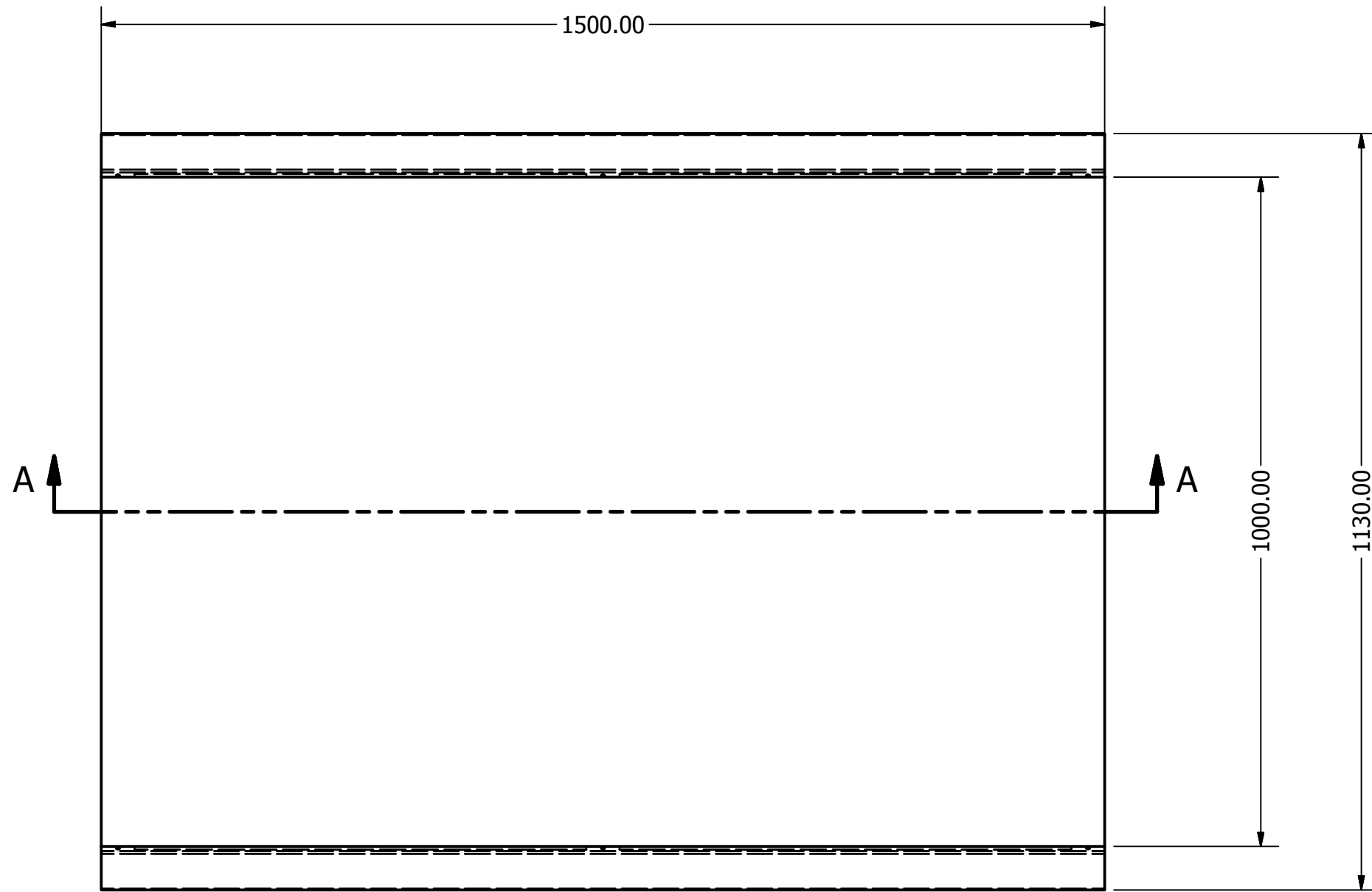
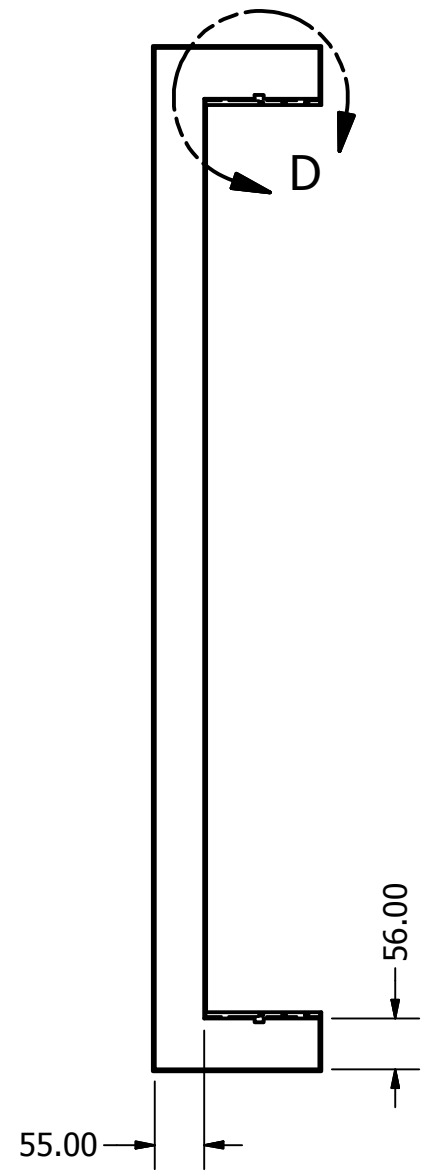
DETAIL D
SCALE 0.24 : 1

Lamina de acero Galvanizado
Calibre 18

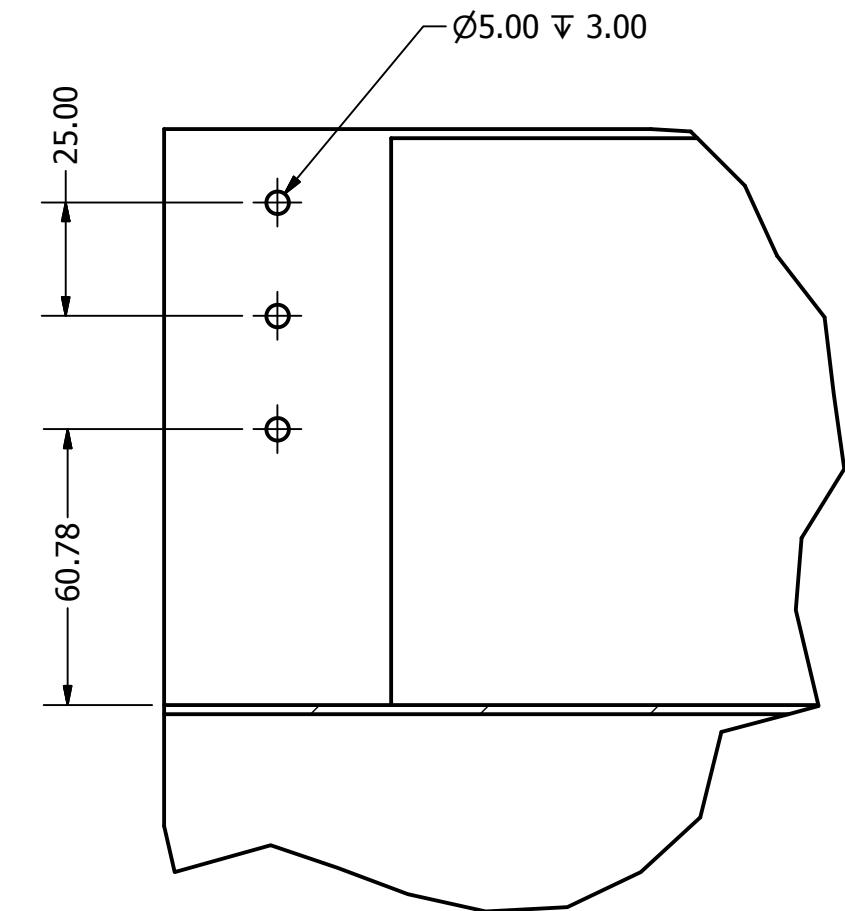
Pletina 2pulg x 3/16pulg



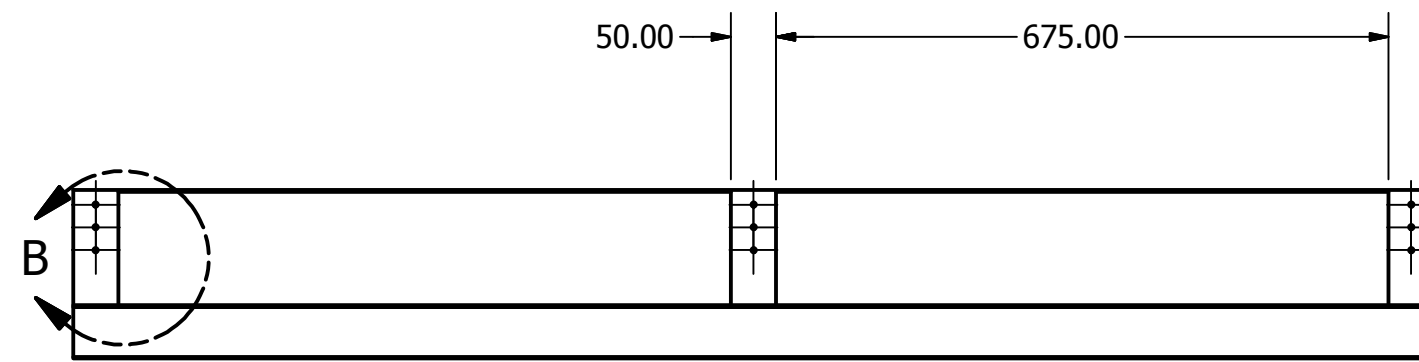
Isometria
SCALE 0.08 : 1



SECTION A-A
SCALE 0.12 : 1

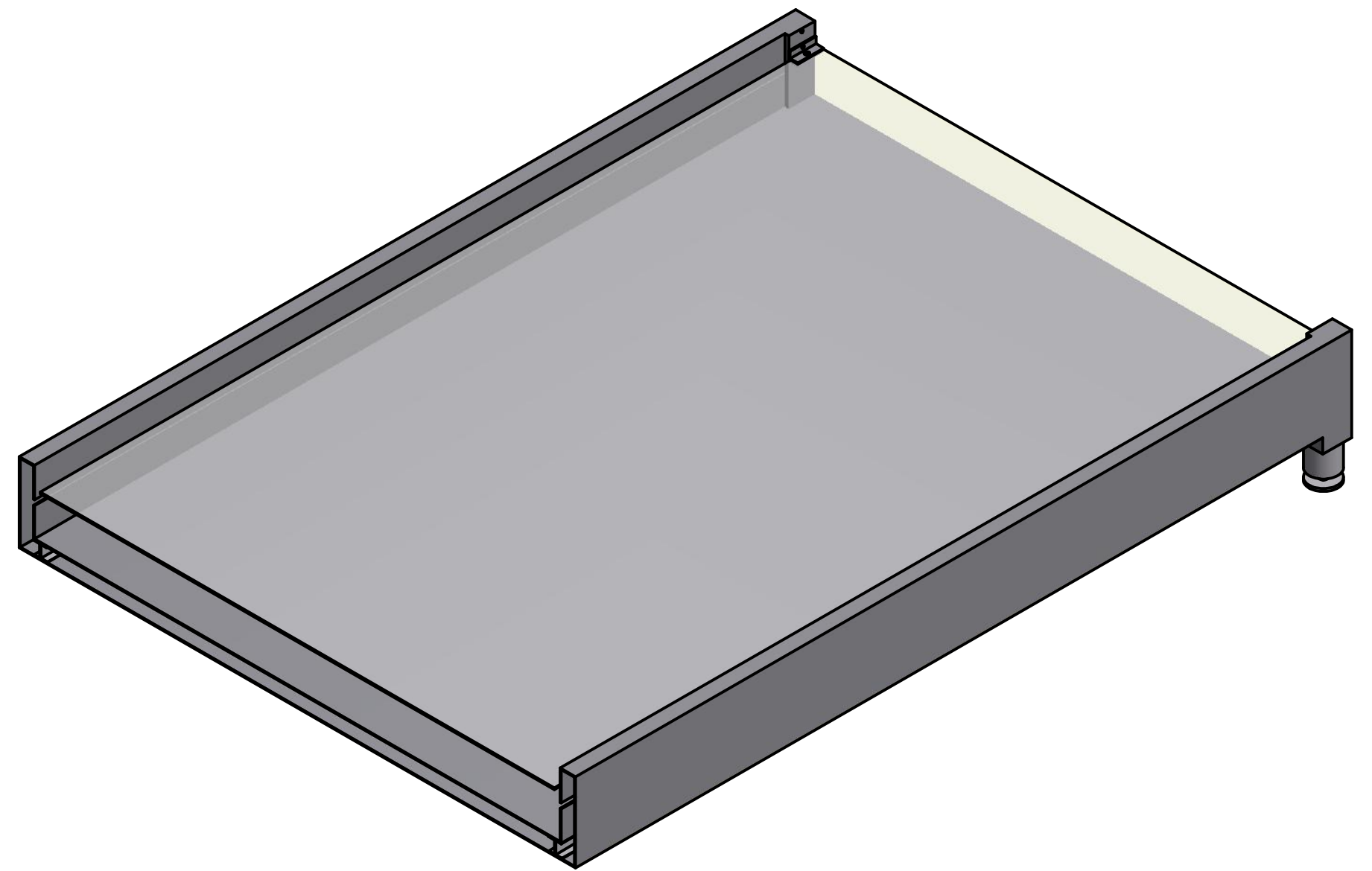


DETAIL B
SCALE 0.60 : 1

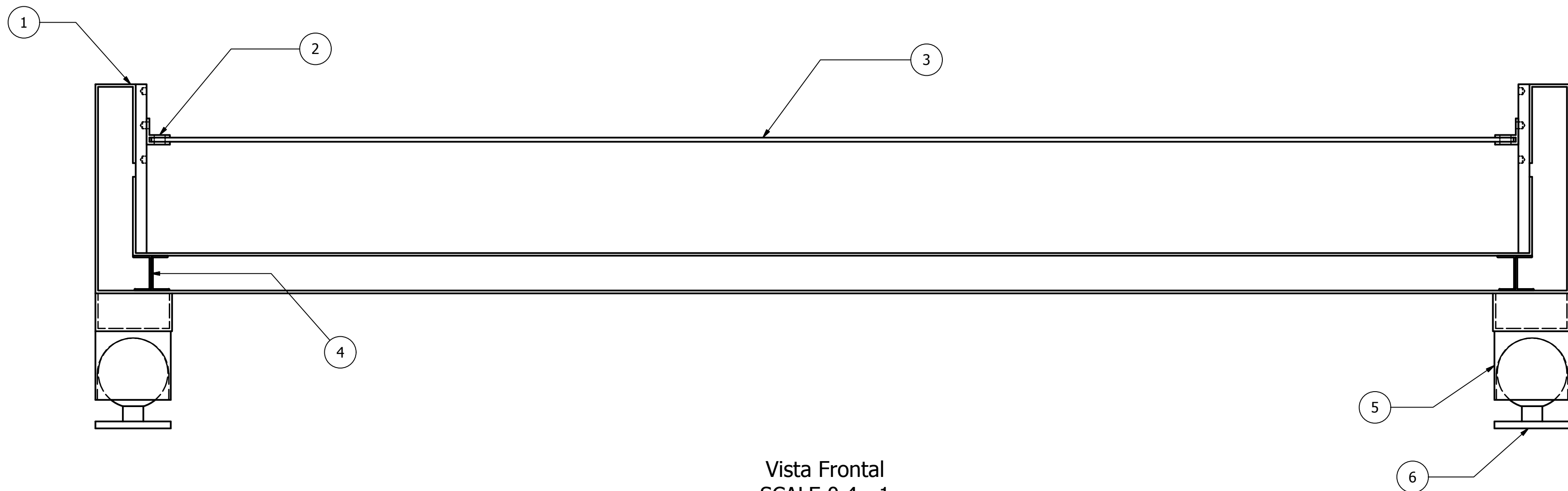


Elaborado Meza, Maria C. Carvalho, Daniel	Fecha 11/14/2012	UNIVERSIDAD CENTRAL DE VENEZUELA	
		TITULO Estructura base del Modulo fijo	
Elemento Modulos		REV	
		SHEET 2 OF 4	

PARTS LIST			
ITEM	QTY	PART NUMBER	MATERIAL
1	1	Módulo móvil (estructura)	Galvanized Steel
2	2	Soporte de lamina transparente	Galvanized Steel
3	1	Lámina transparente	PMMA Plastic
4	4	TES 1pulg x 1.5m	Aluminum-6061
5	2	Soporte de Rotula	Aluminum-6061
6	2	Rotula	Aluminum-6061

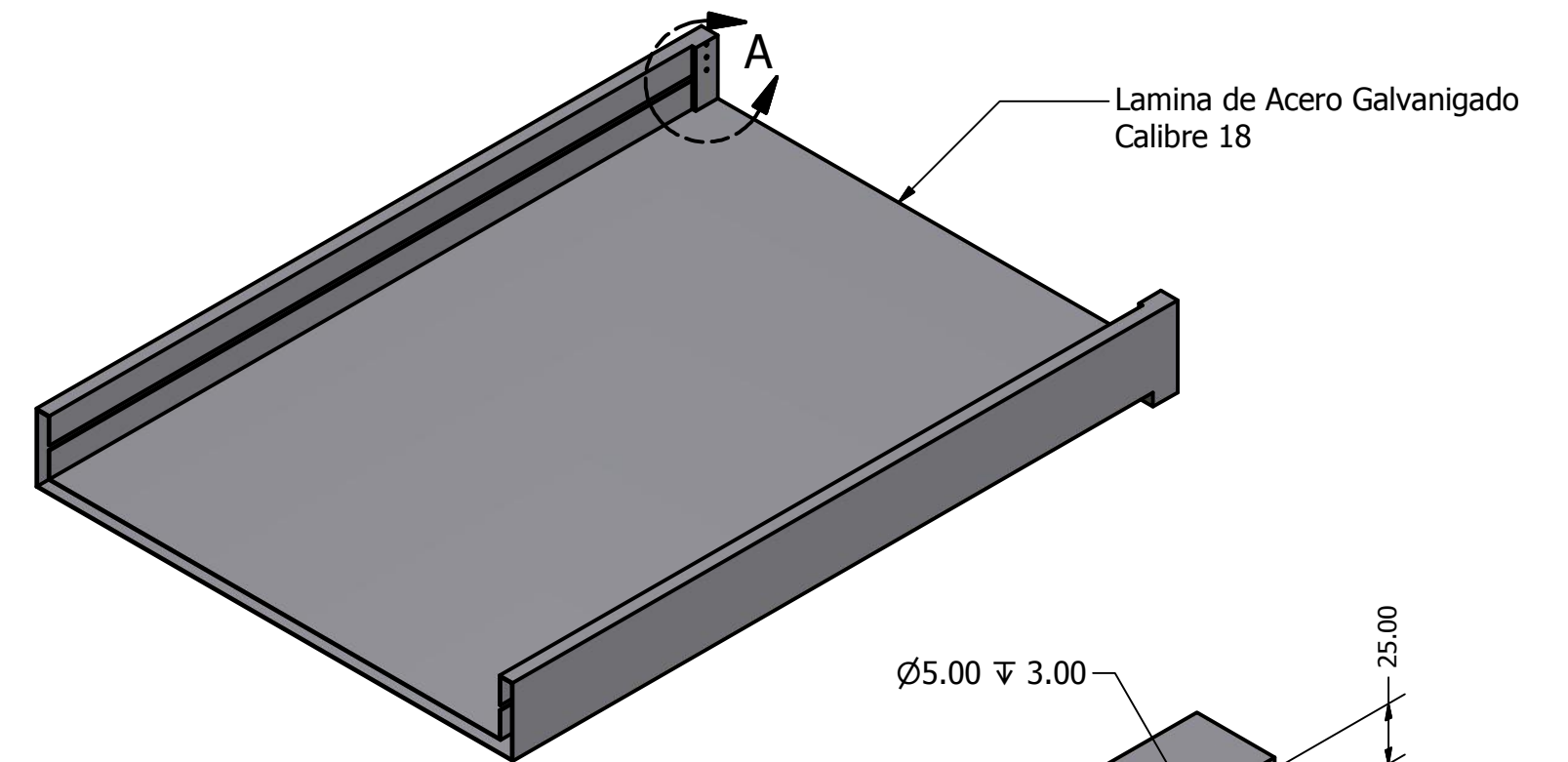
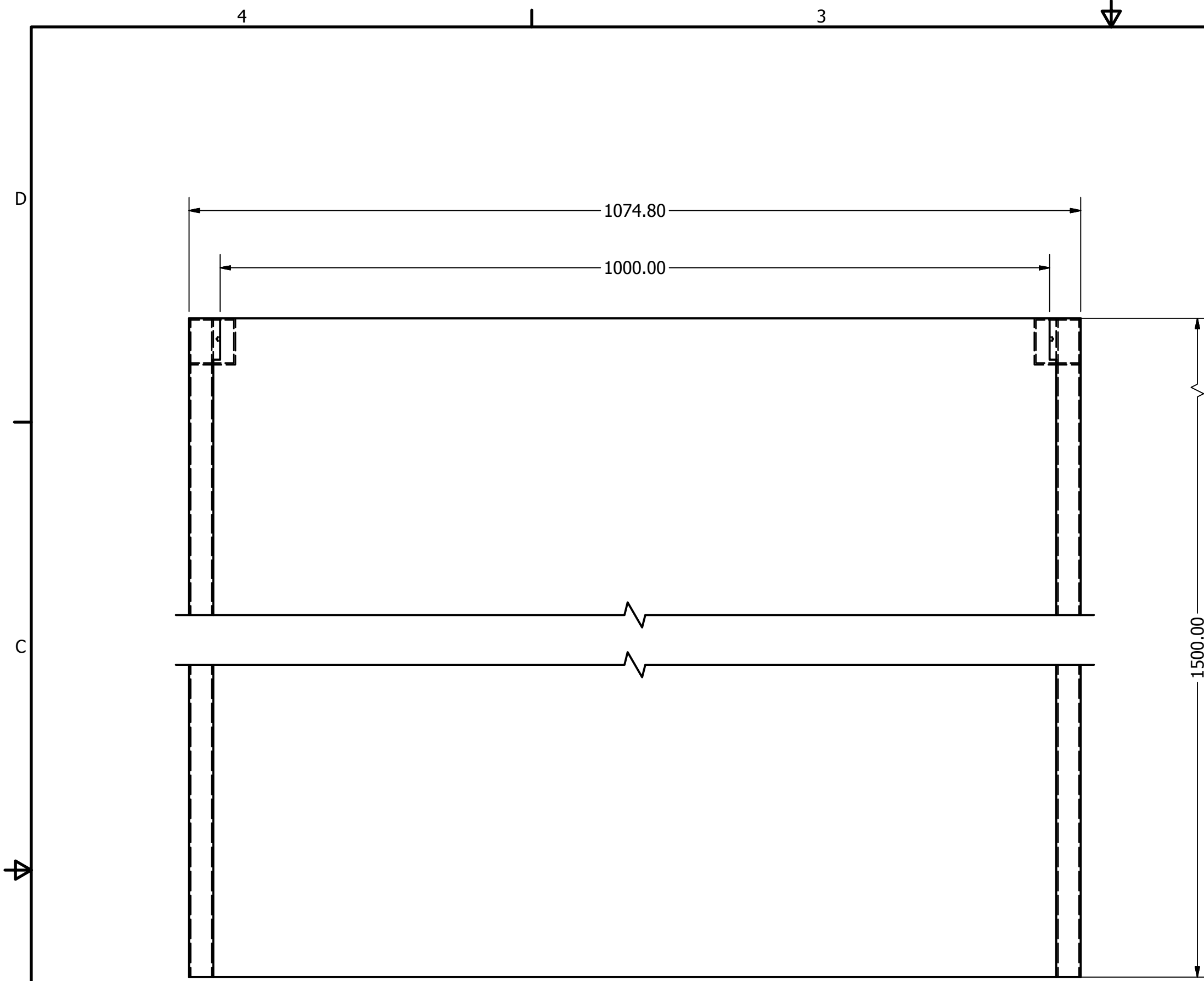


Isometria
SCALE 0.13 : 1

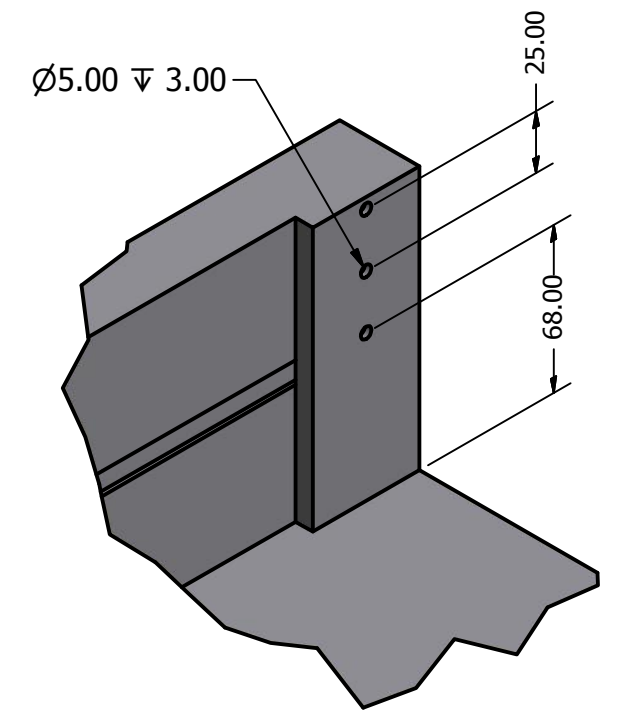


Vista Frontal
SCALE 0.4 : 1

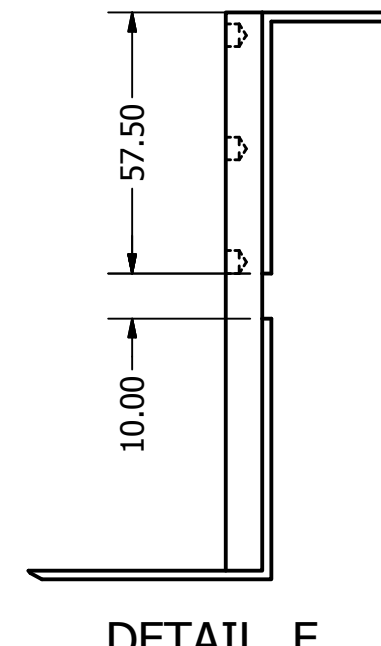
Elaborado	Fecha	UNIVERSIDAD CENTRAL DE VENEZUELA	
Meza, Maria C. Carvalho, Daniel	11/14/2012	TITULO	
		Módulo móvil del colector solar	
		Elemento	REV
		Modulos	
			SHEET 3 OF 4



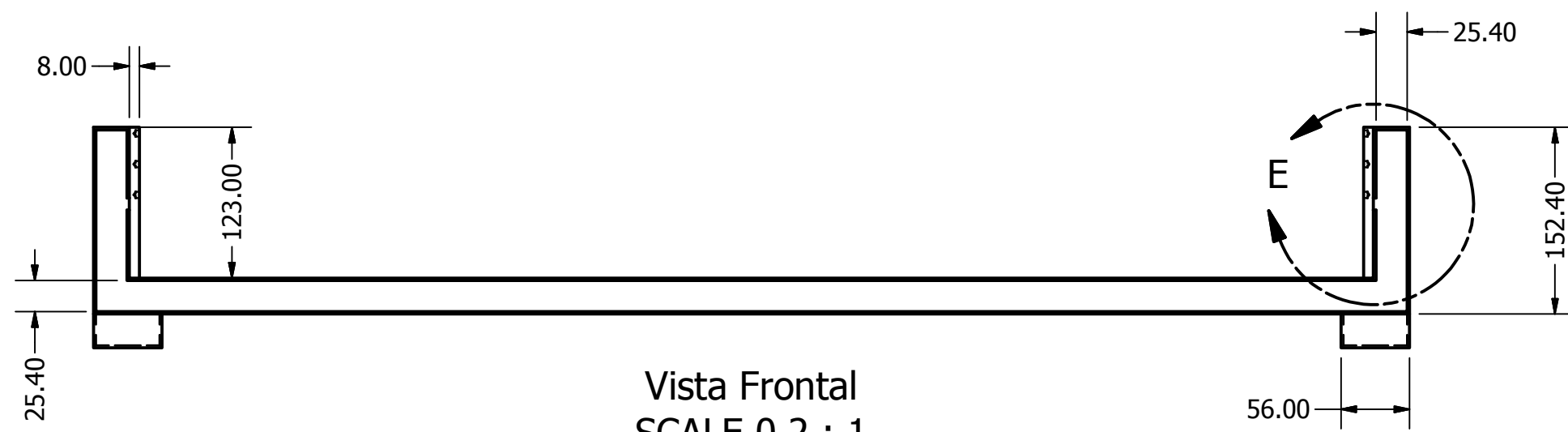
Isometria
SCALE 0.085 : 1



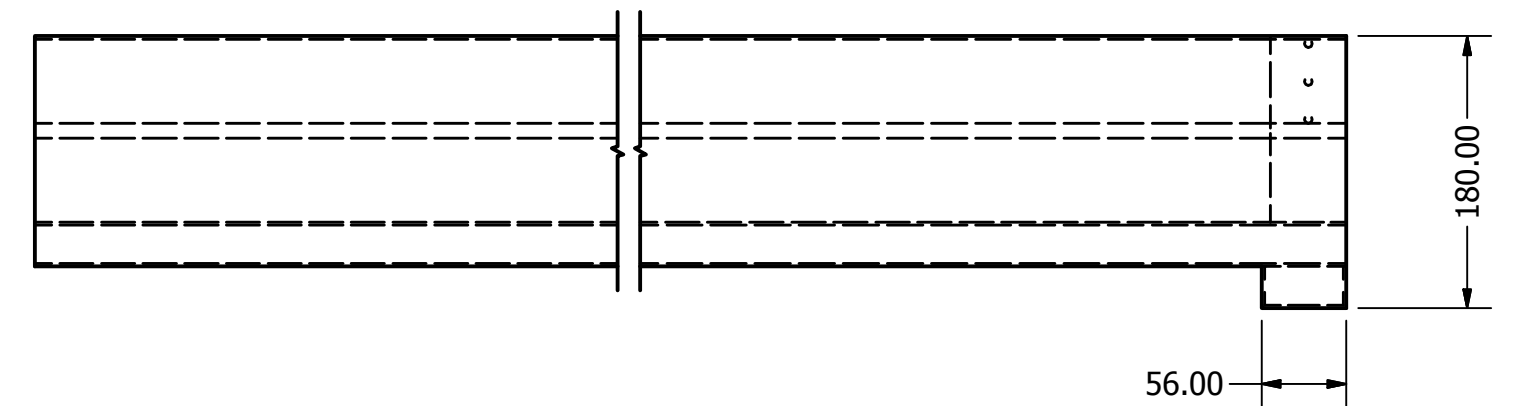
DETAIL A
SCALE 2 / 5



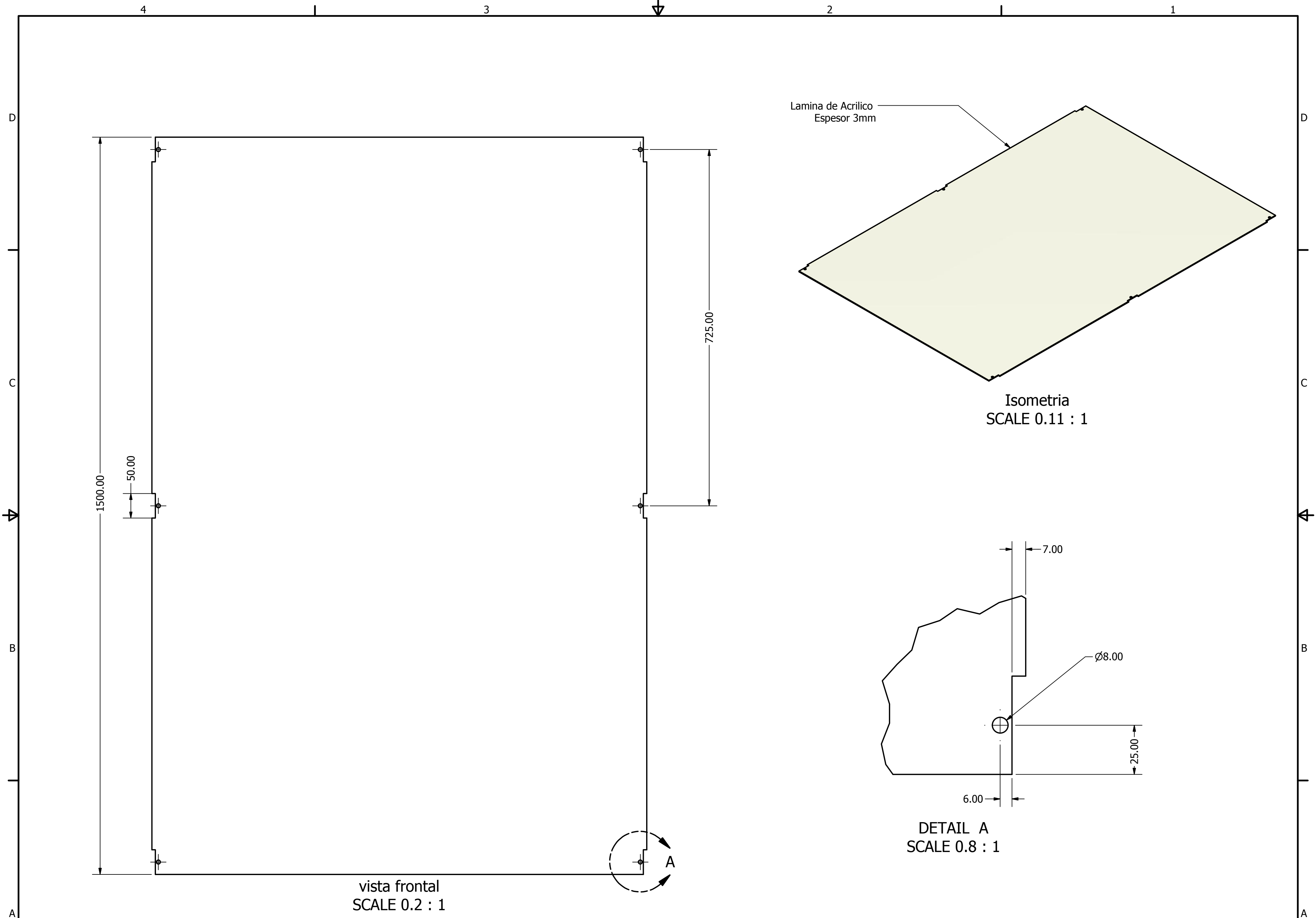
DETAIL E
SCALE 0.60 : 1



Vista Frontal
SCALE 0.2 : 1



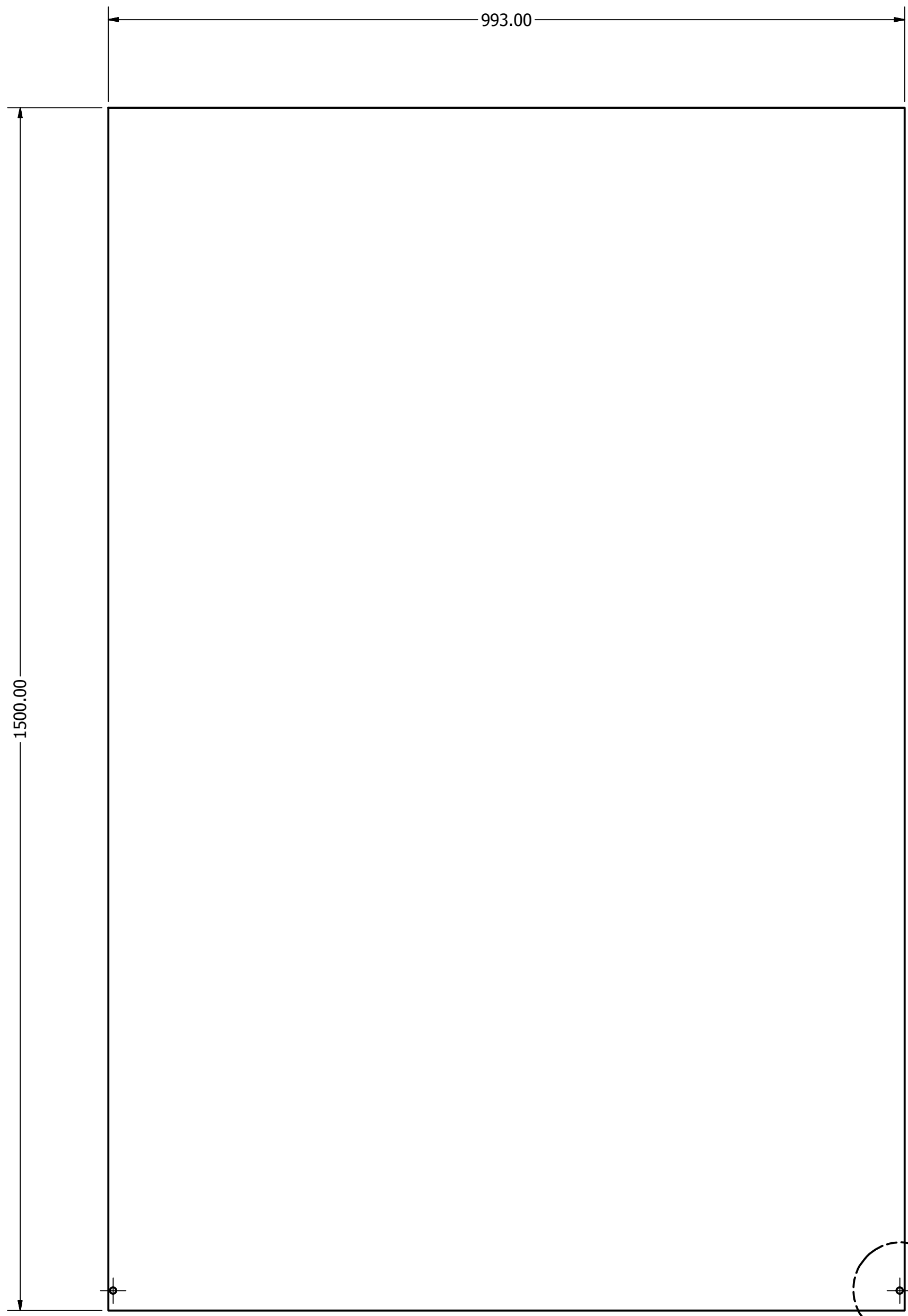
Elaborado	Fecha	UNIVERSIDAD CENTRAL DE VENEZUELA	
Meza, Maria C. Carvalho, Daniel	11/14/2012	TITULO	REV
		Estructura base del Módulo móvil	
		Elemento	
		Modulos	
		SHEET 4 OF 4	



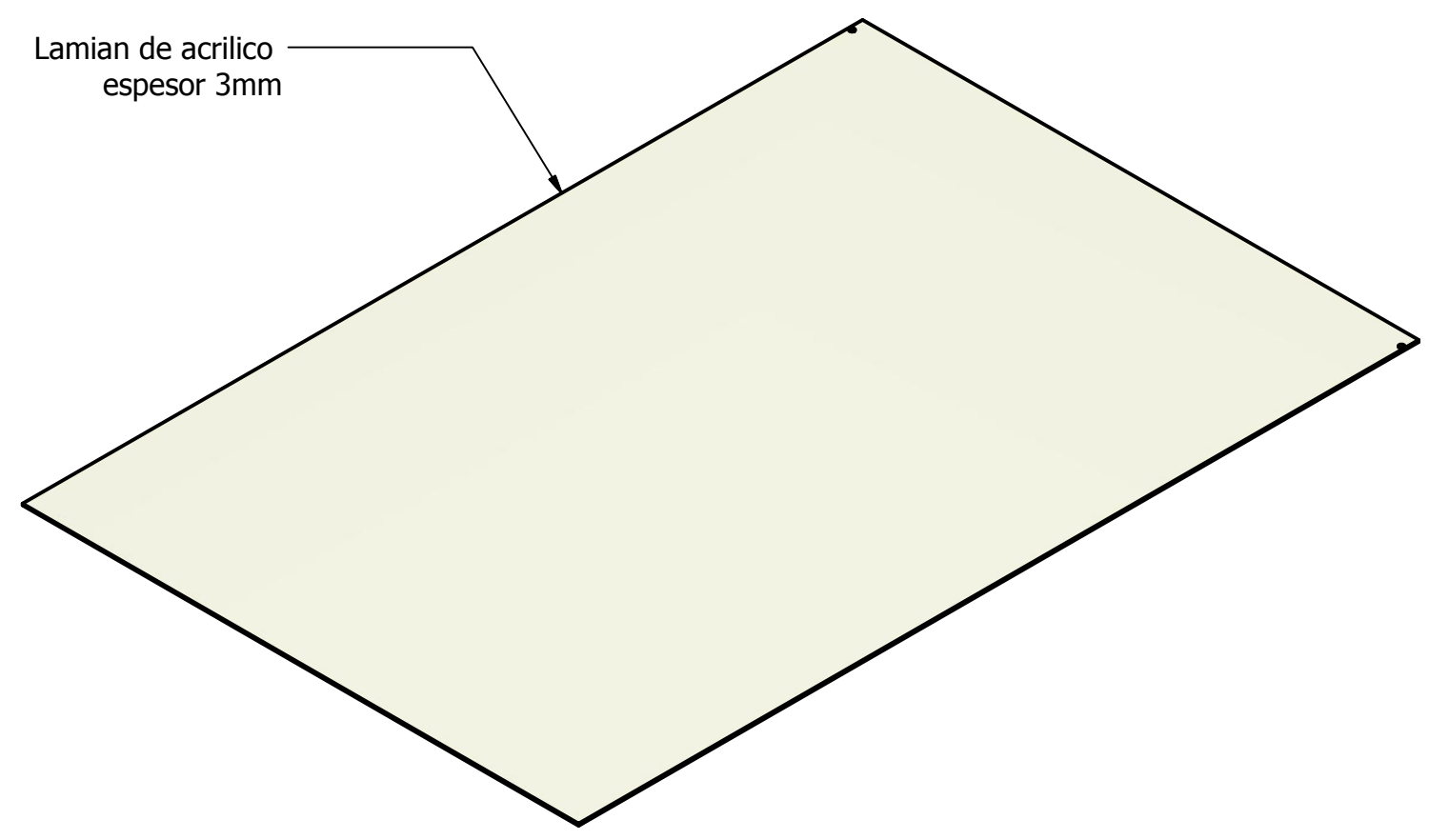
Elaborado	Fecha	UNIVERSIDAD CENTRAL DE VENEZUELA	
Meza, Maria C. Carvalho, Daniel	11/27/2012	TITULO	
		Placa transparente de Modulo fijo	
		Elemento	REV
		Placas transparentes	
		SHEET 1 OF 3	

4 3 2 1

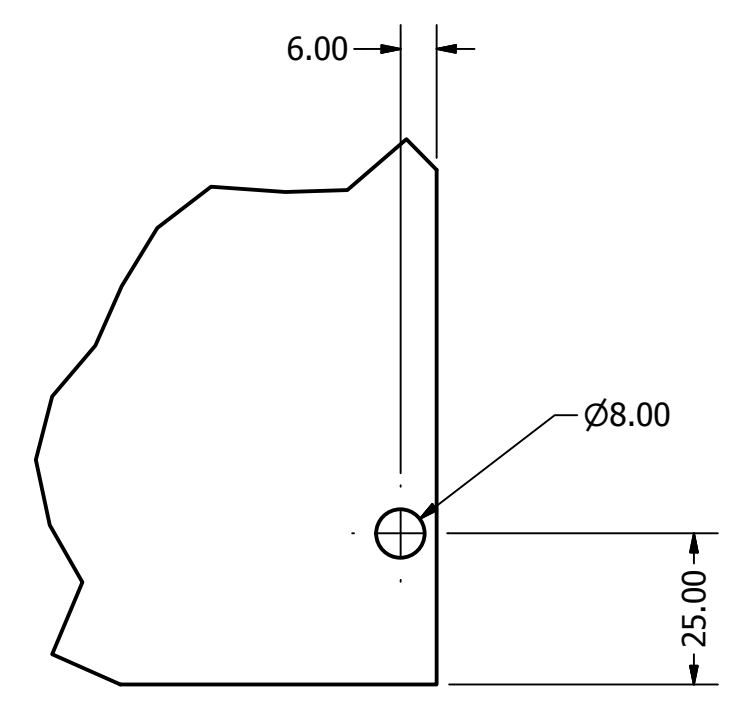
D
C
B
A



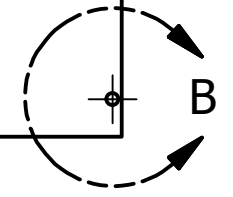
Vista Frontal
SCALE 0.2 : 1



Isometria
SCALE 0.11 : 1

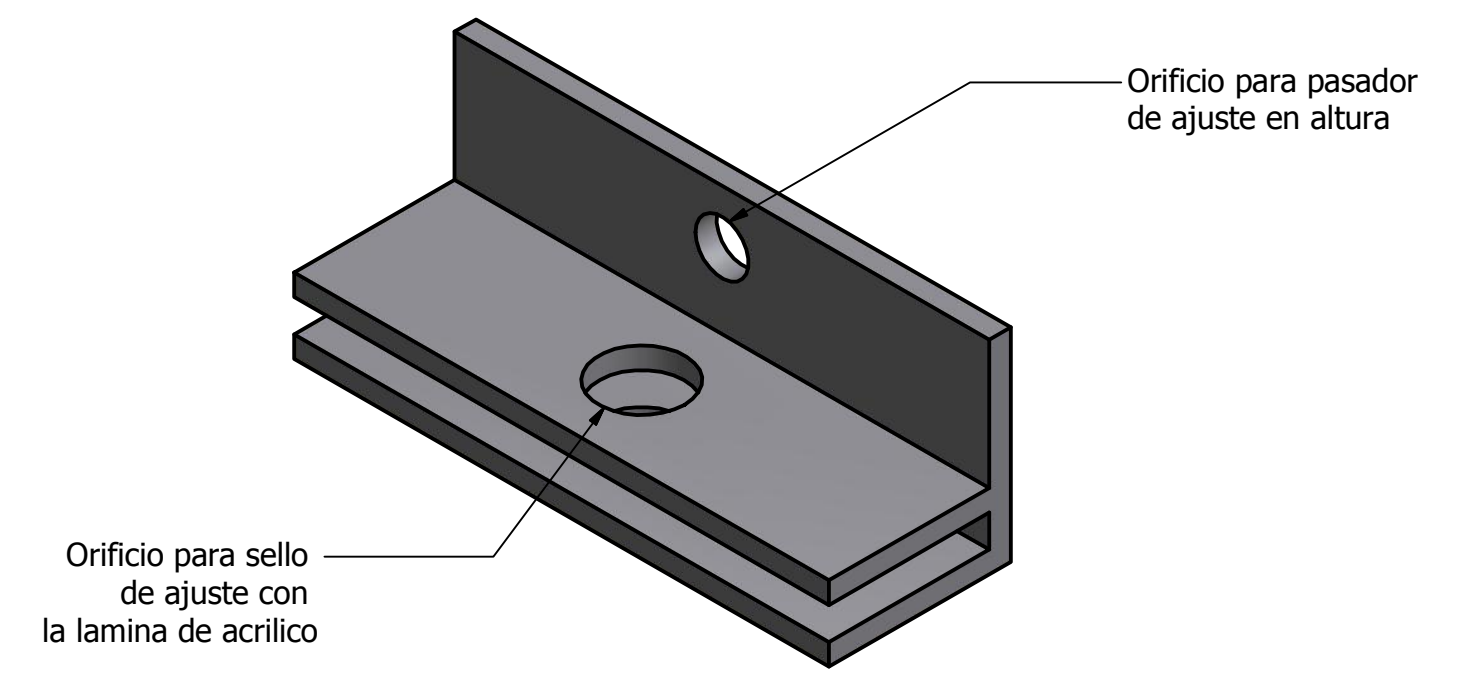
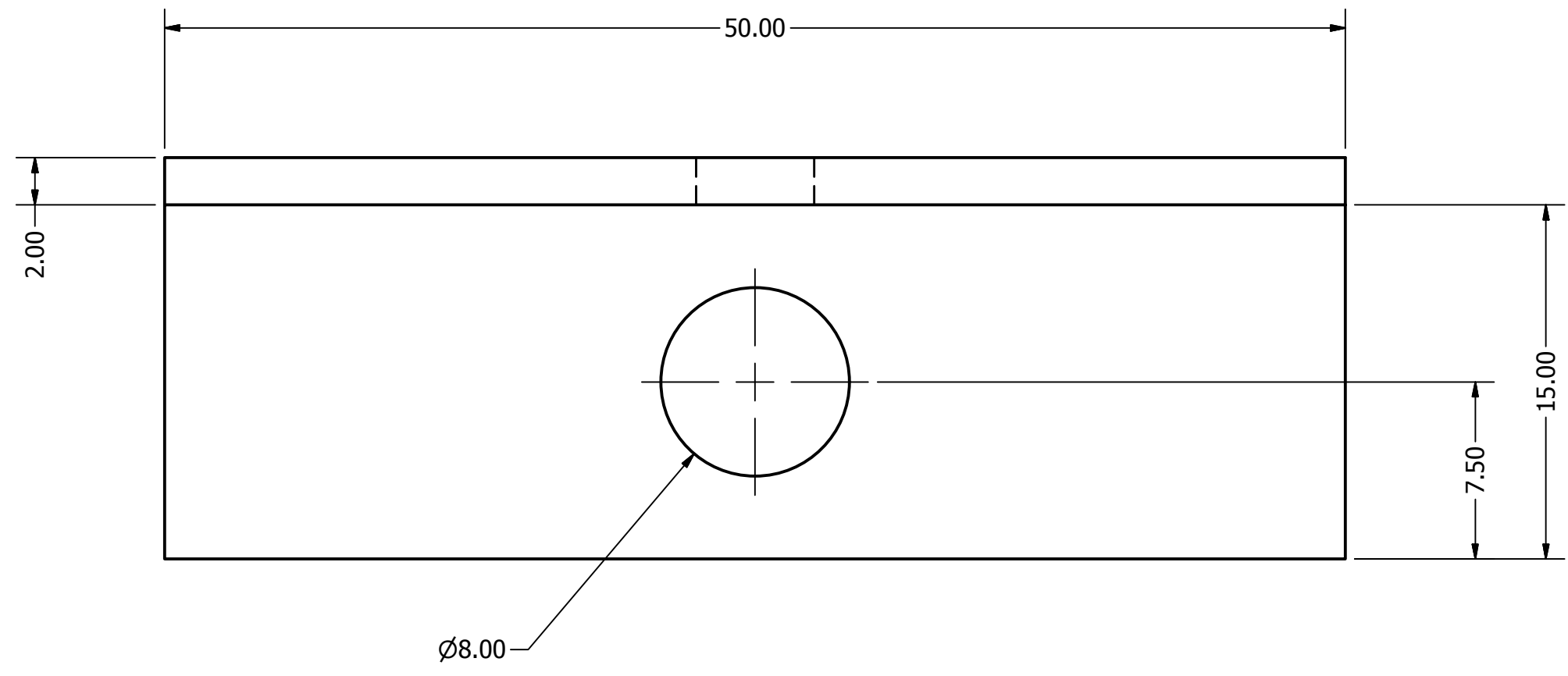


DETAIL B
SCALE 0.80 : 1

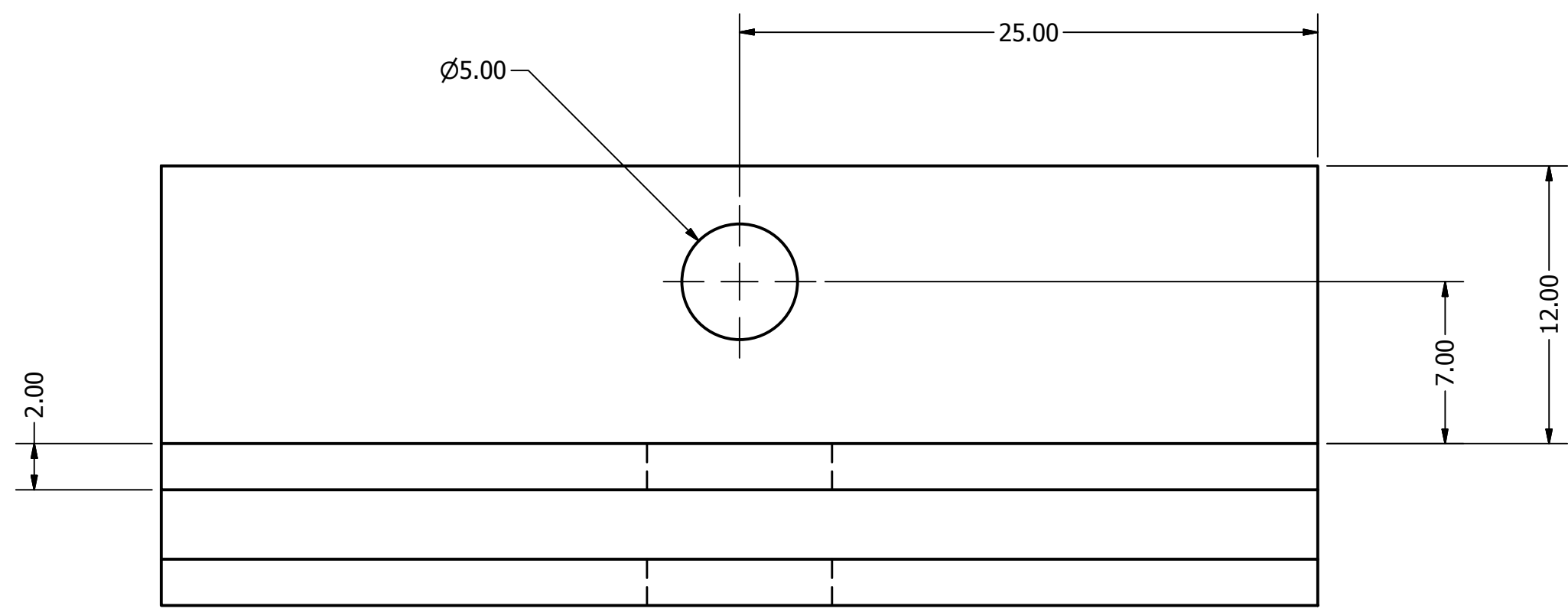


Elaborado	Fecha	UNIVERSIDAD CENTRAL DE VENEZUELA	
Meza, Maria C. Carvalho, Daniel	11/27/2012	TITULO Placa transparente de Modulo movil	
		Elemento Placas transparentes	REV
			SHEET 2 OF 3

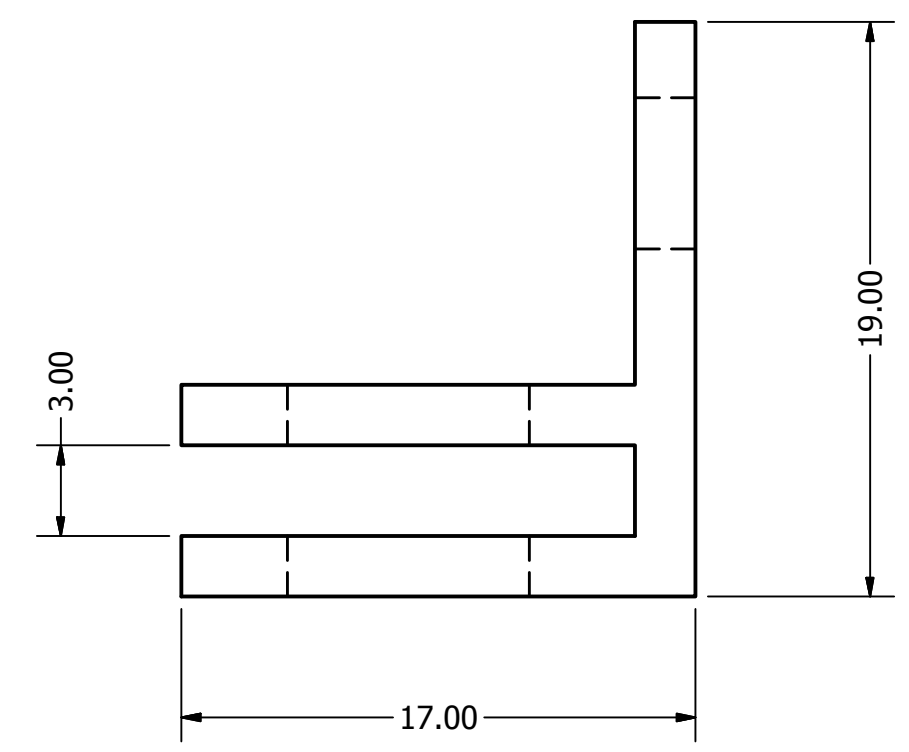
4 3 2 1



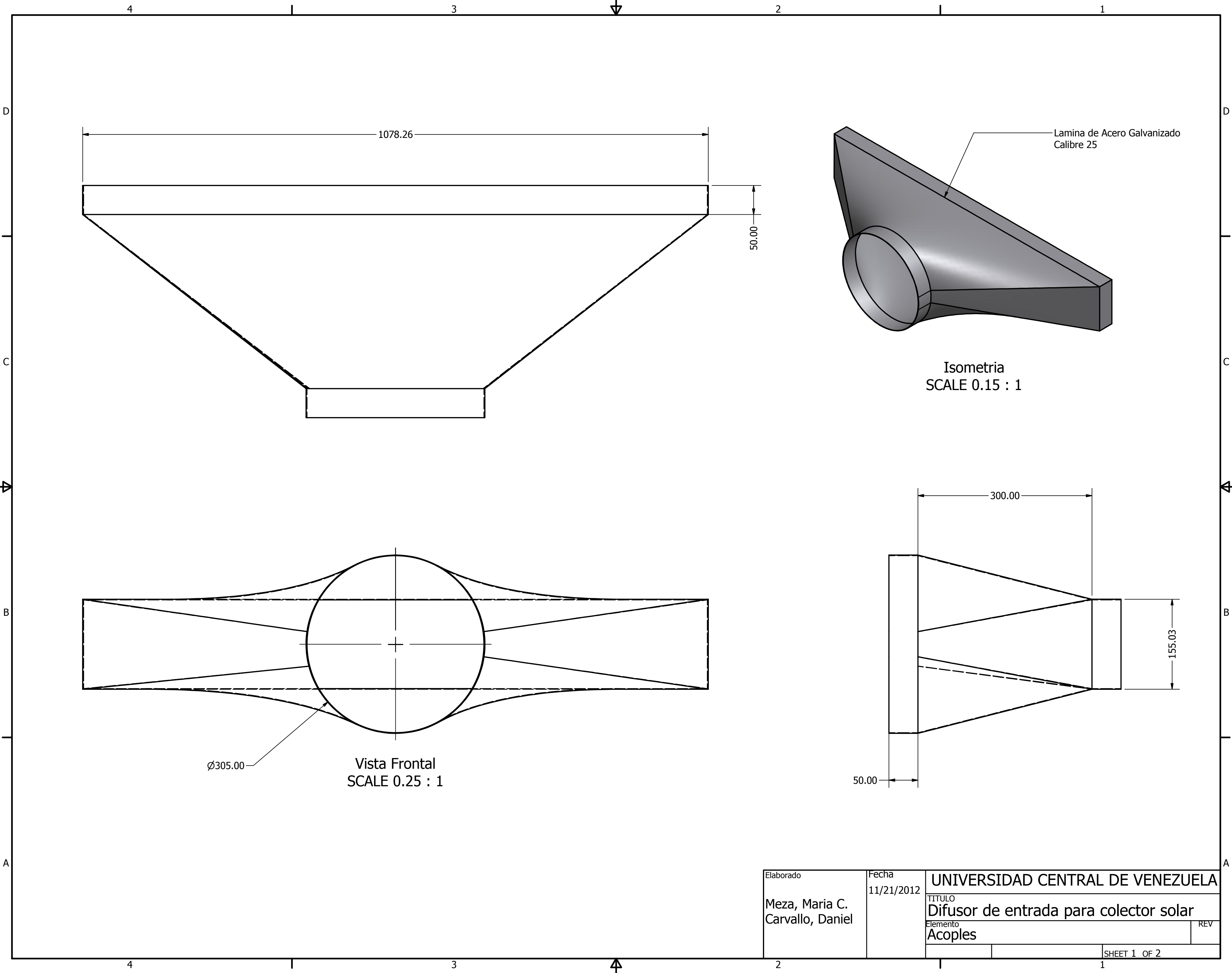
Isometria
SCALE 2 : 1



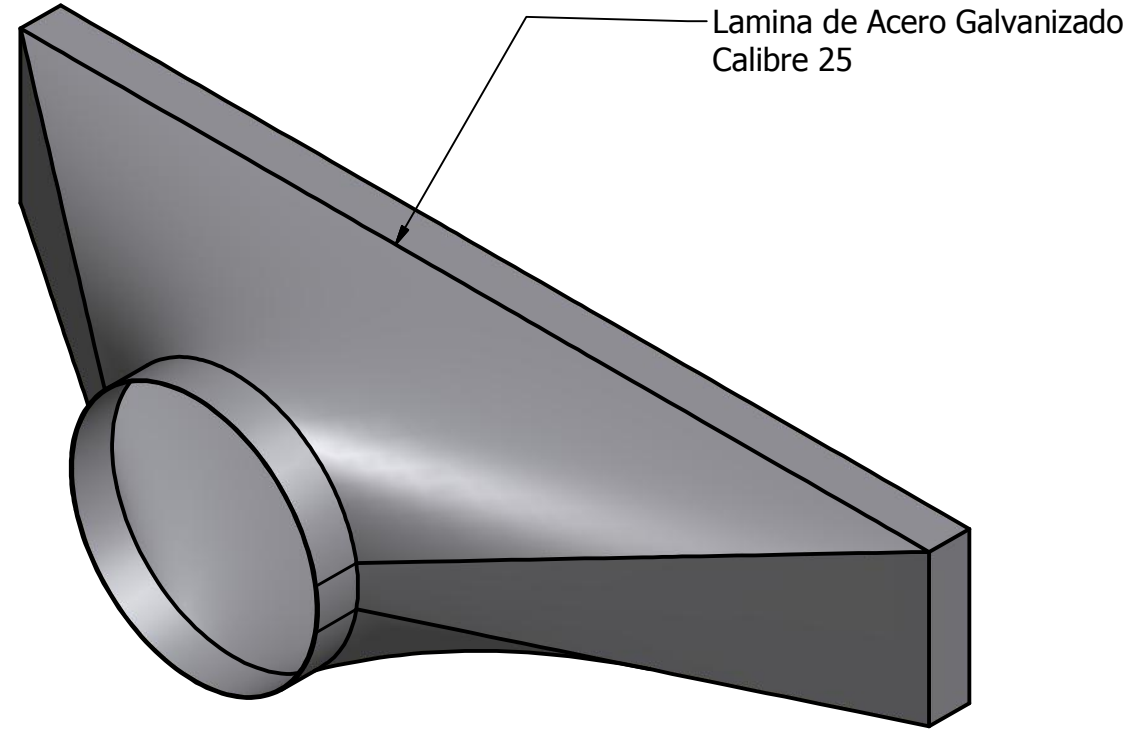
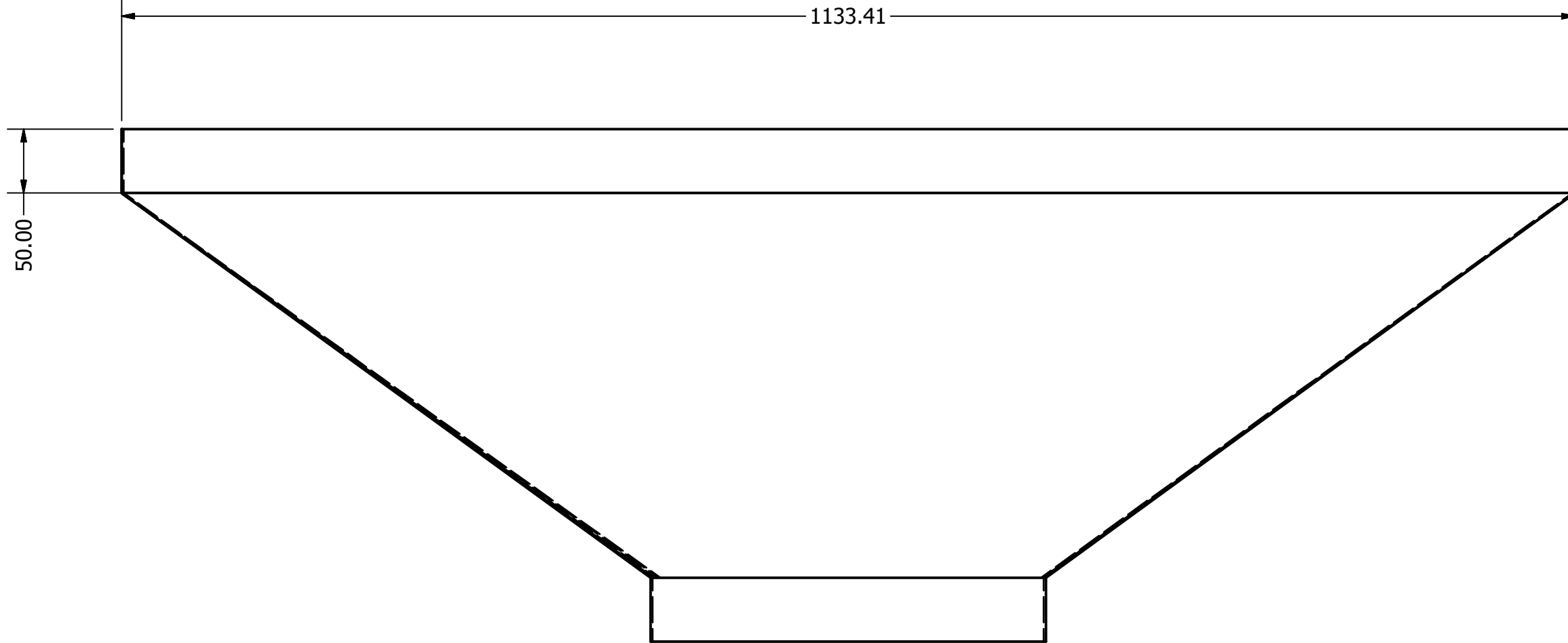
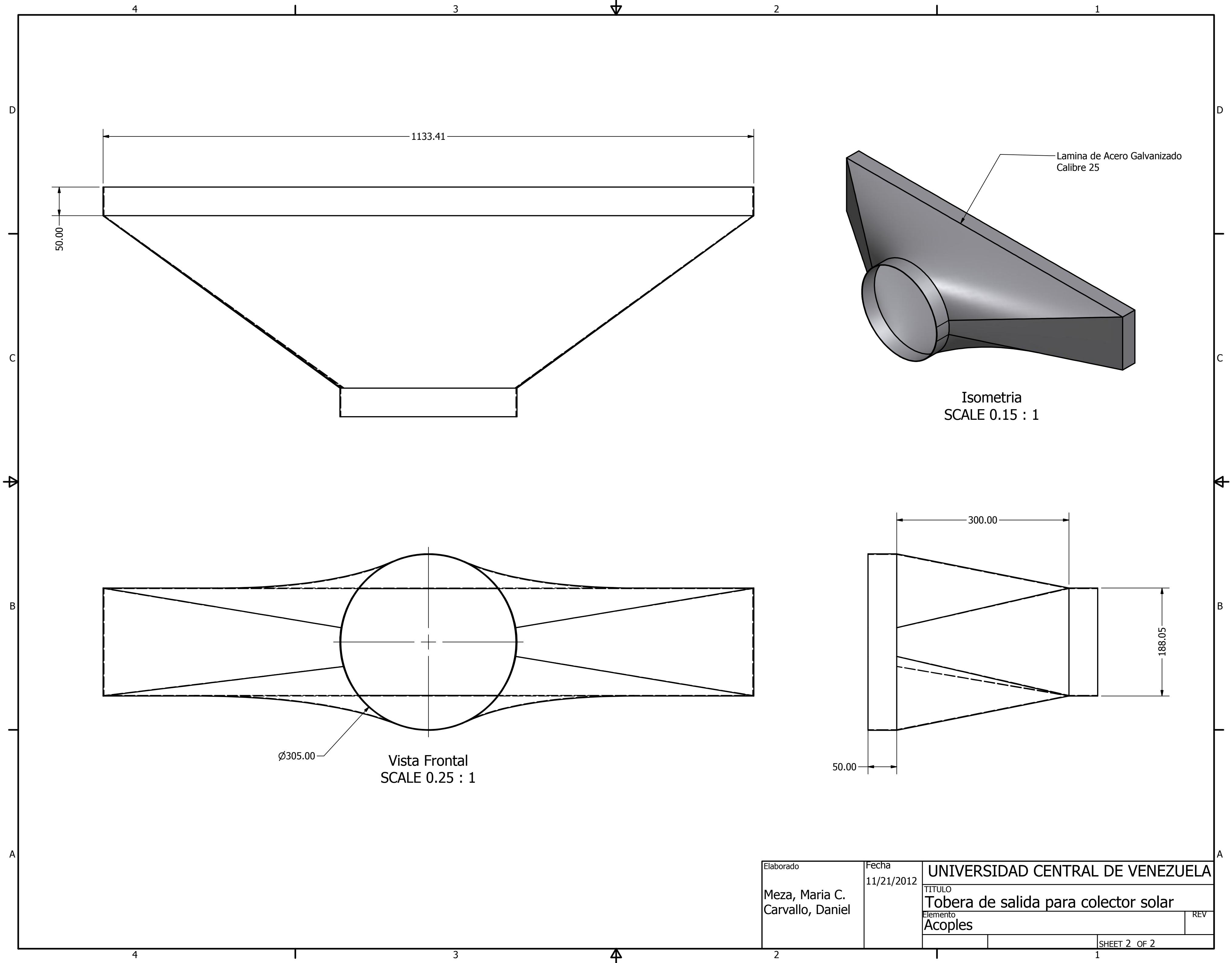
Vista Frontal
SCALE 4 : 1



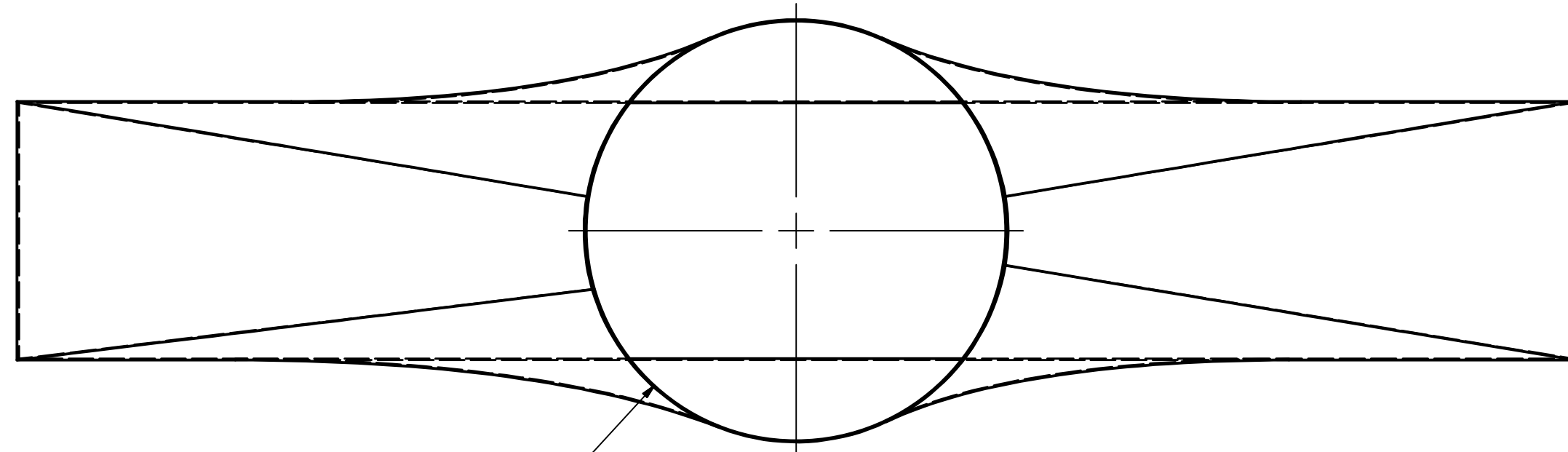
Elaborado	Fecha	UNIVERSIDAD CENTRAL DE VENEZUELA	
Meza, Maria C. Carvalho, Daniel	11/27/2012	TITULO Soporte para placa transparente	
		Elemento Placas transparentes	REV
		SHEET 3 OF 3	



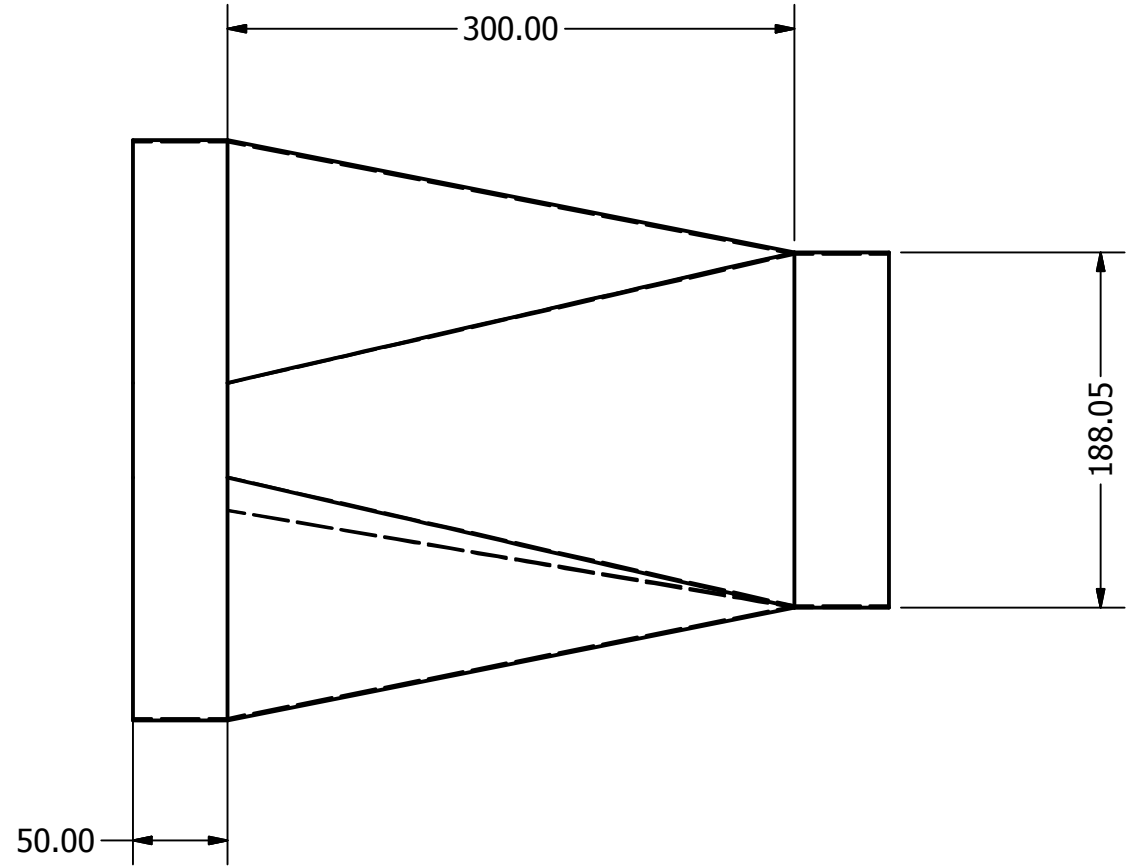
Elaborado	Fecha	UNIVERSIDAD CENTRAL DE VENEZUELA	
Meza, Maria C. Carvalho, Daniel	11/21/2012	TITULO	
		Difusor de entrada para colector solar	
		Elemento	REV
		Acoples	
		SHEET 1 OF 2	



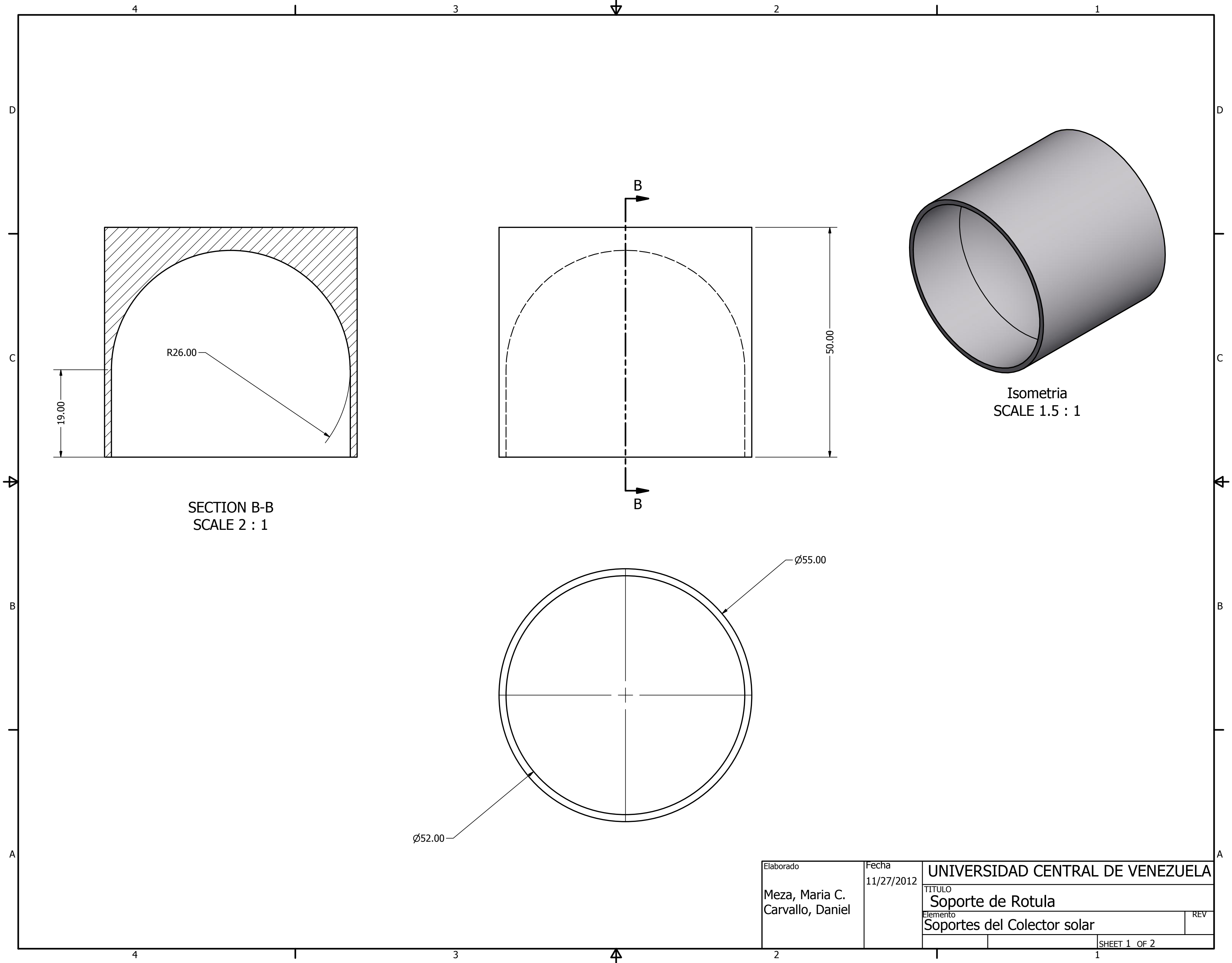
Isometria
SCALE 0.15 : 1



Vista Frontal
SCALE 0.25 : 1



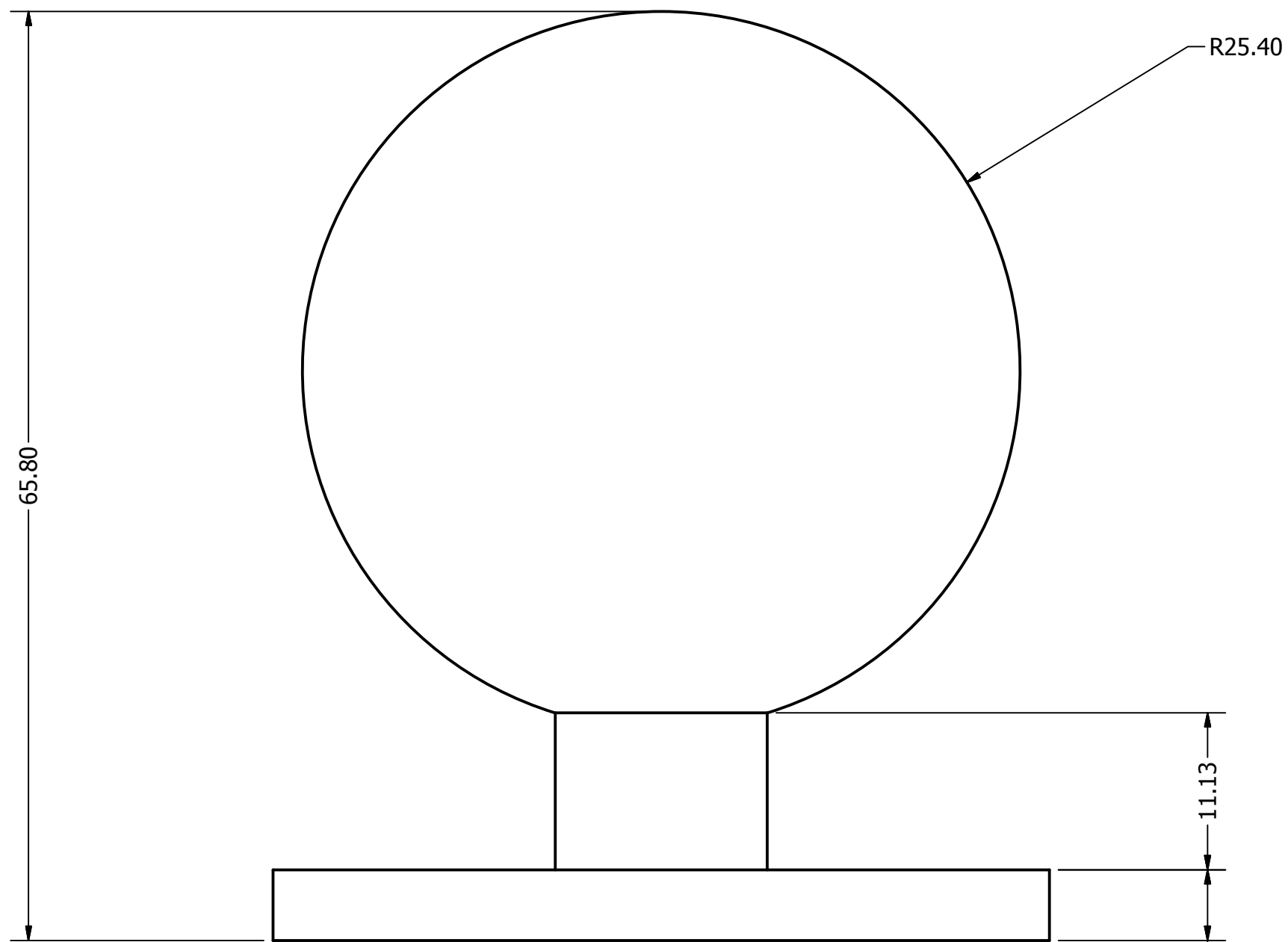
Elaborado	Fecha	UNIVERSIDAD CENTRAL DE VENEZUELA	
Meza, Maria C. Carvalho, Daniel	11/21/2012	TITULO	
		Tobera de salida para colector solar	
		Elemento	REV
		Acoples	
		SHEET 2 OF 2	



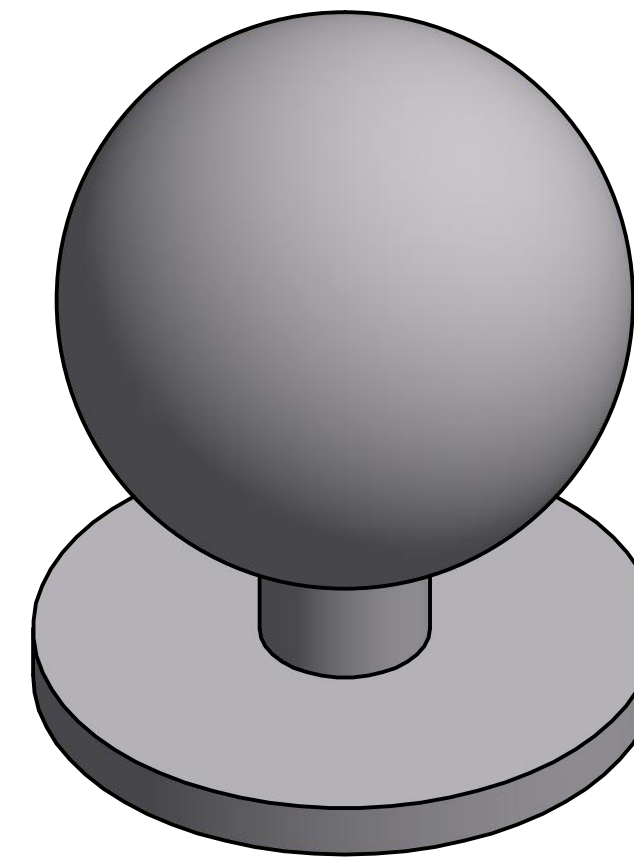
SECTION B-B
SCALE 2 : 1

Isometria
SCALE 1.5 : 1

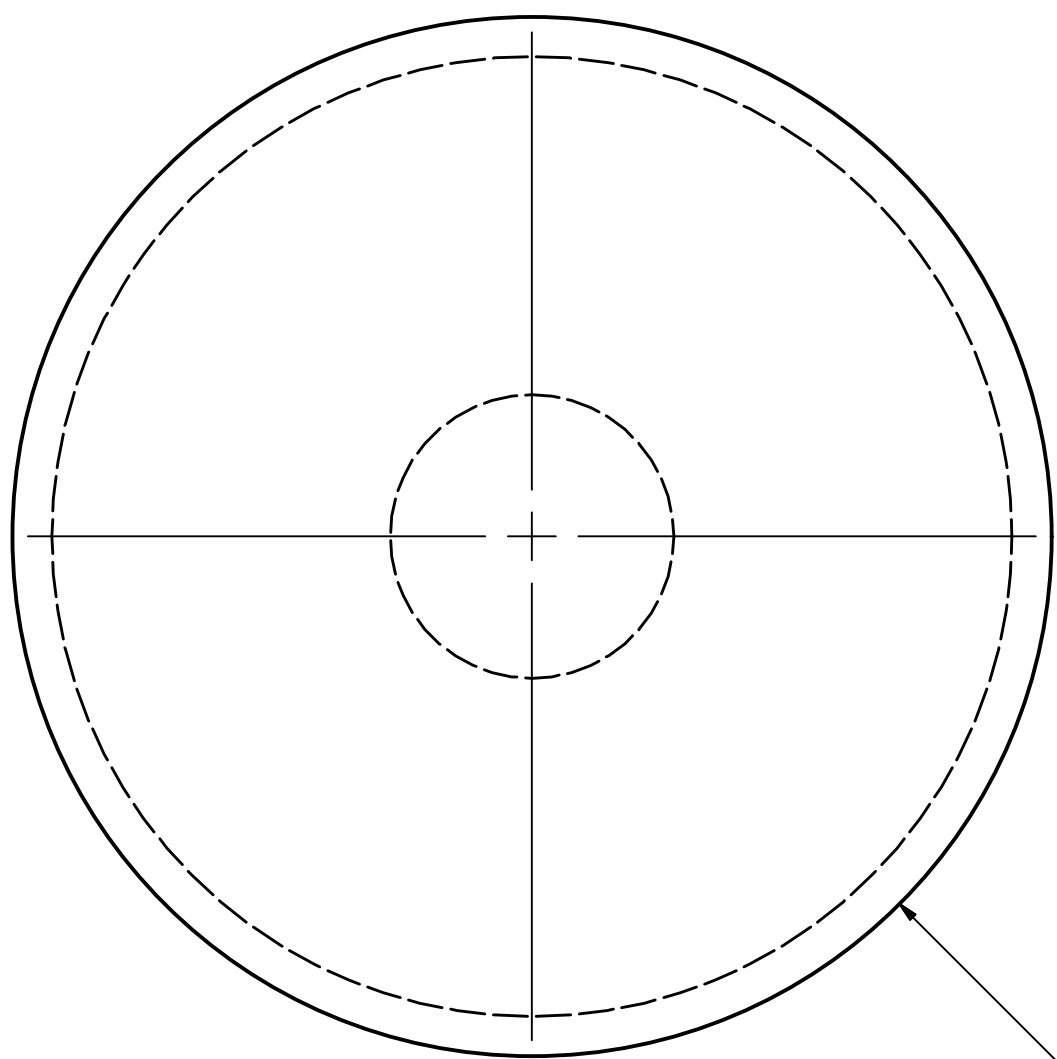
Elaborado	Fecha	UNIVERSIDAD CENTRAL DE VENEZUELA	
Meza, Maria C. Carvalho, Daniel	11/27/2012	TITULO	
		Soporte de Rotula	
		Elemento	REV
		Soportes del Colector solar	
		SHEET 1 OF 2	



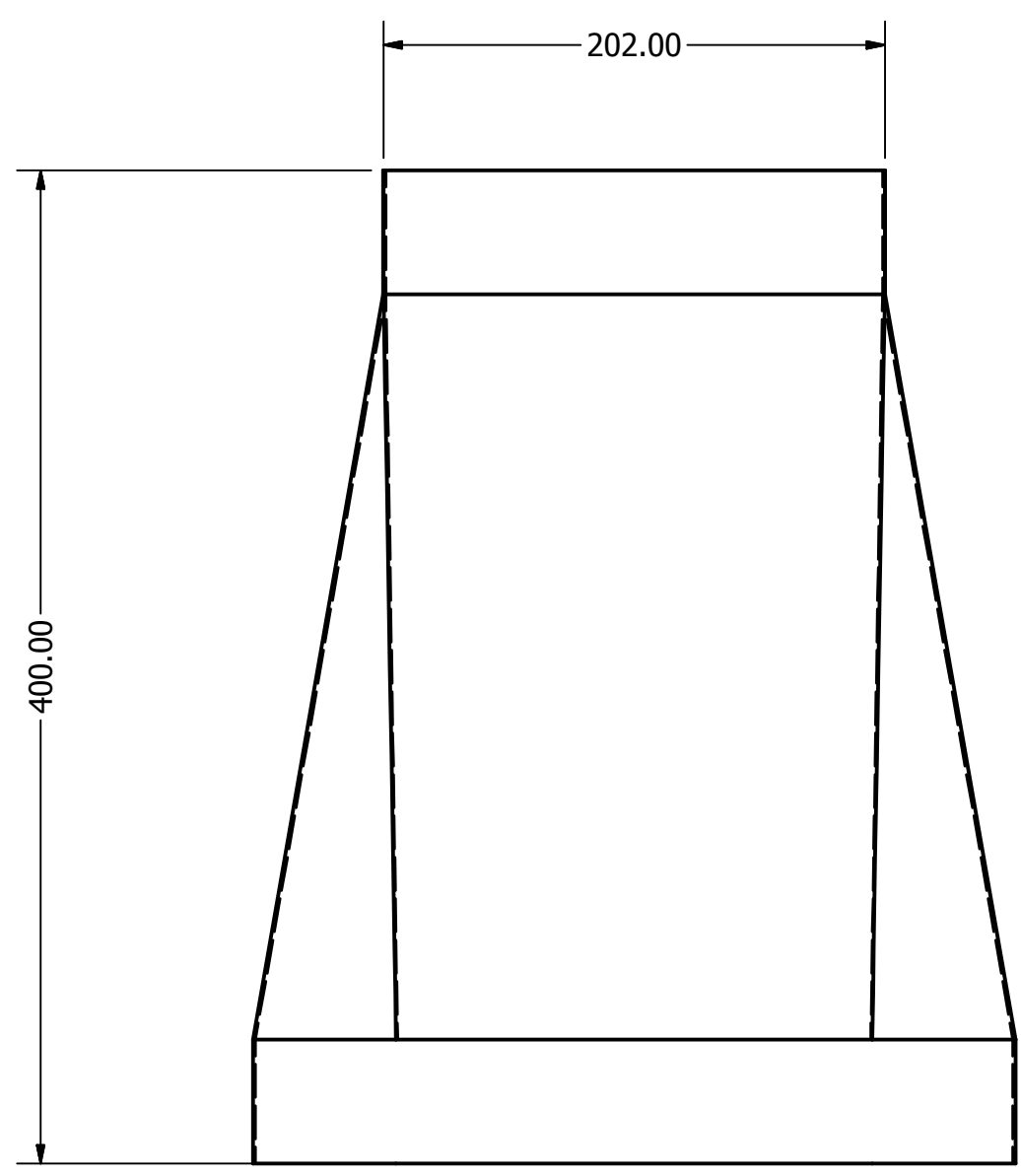
Vista Frontal
SCALE 2.5 : 1



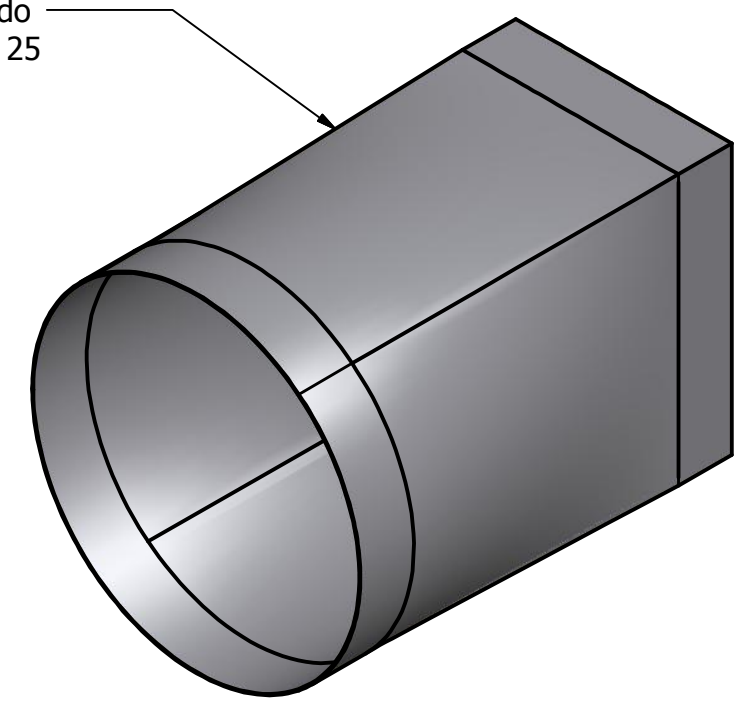
Isometria
SCALE 1.5 : 1



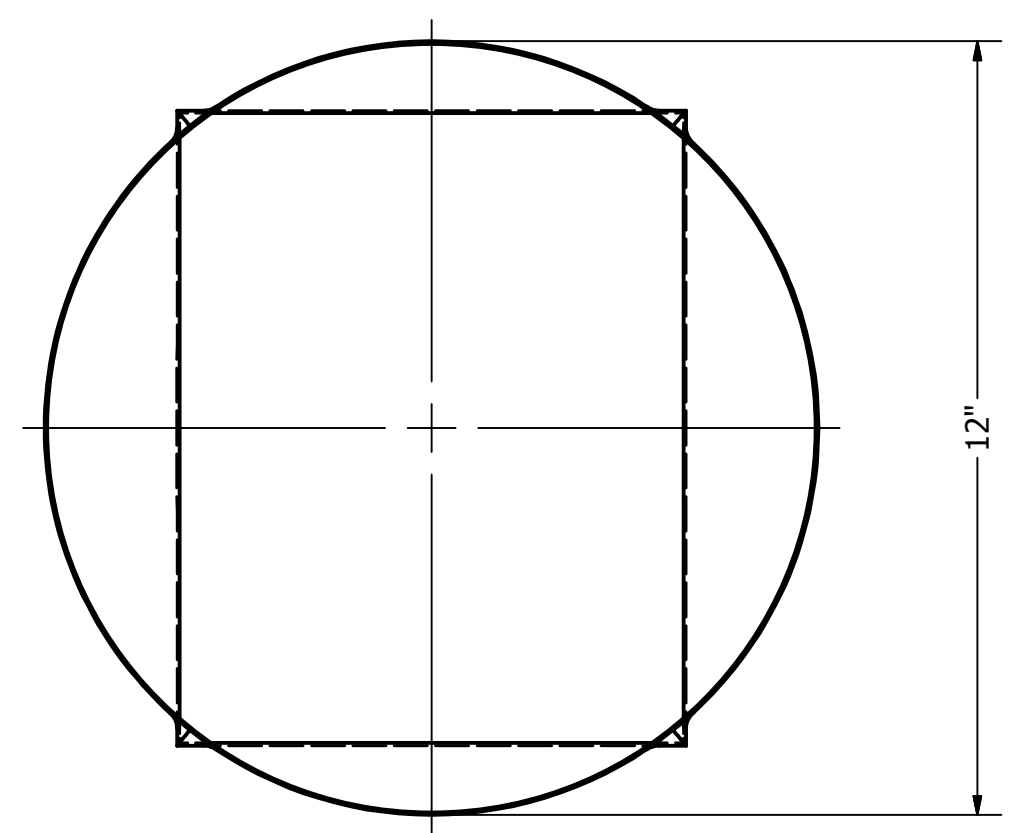
Elaborado	Fecha	UNIVERSIDAD CENTRAL DE VENEZUELA	
Meza, Maria C. Carvalho, Daniel	11/27/2012	TITULO Rotula	
		Elemento	REV
		Soportes del Colector solar	
		SHEET 2 OF 2	



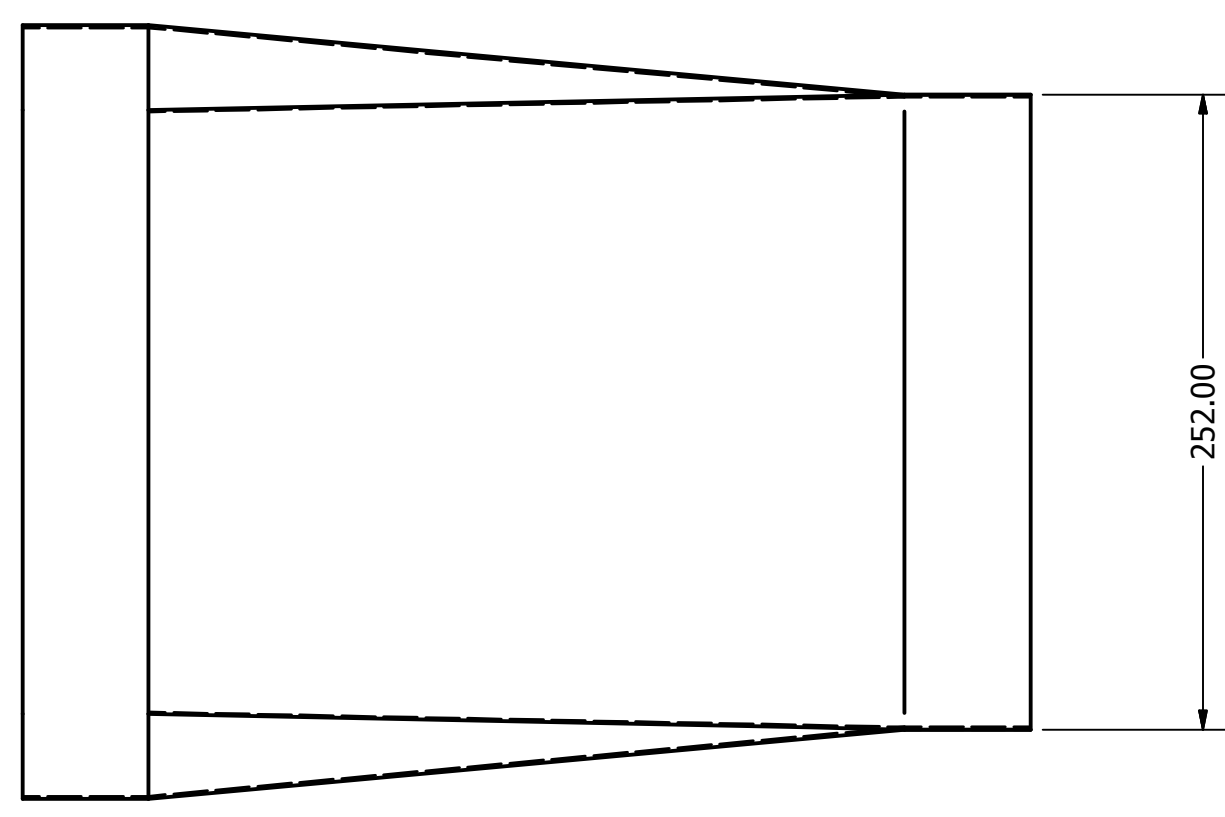
Acero Galvanizado
calibre 25



Isometria
SCALE 1 : 5



Vista frontal
SCALE 1 : 3



Elaborado	Fecha	UNIVERSIDAD CENTRAL DE VENEZUELA	
Meza, Maria C. Carvalho, Daniel	1/17/2013	TITULO Tobera para el ventilador Centrifugo	
		Elemento	REV
		Acople Ventilador	
		SHEET 1 OF 1	